

## Product datasheet for **AP53534PU-N**

### **RAB10 (Center) Rabbit Polyclonal Antibody**

#### **Product data:**

Product Type:	Primary Antibodies
Applications:	FC, WB
Recommended Dilution:	<b>ELISA:</b> 1/1000. <b>Western Blot:</b> 1/100-1/500. <b>Flow Cytometry:</b> 1/10-1/50.
Reactivity:	Human
Host:	Rabbit
Isotype:	Ig
Clonality:	Polyclonal
Immunogen:	KLH conjugated synthetic peptide between 96-125 amino acids from the Central region of human RAB10.
Specificity:	This antibody recognizes Human RAB10 (Center).
Formulation:	PBS State: Aff - Purified State: Liquid purified Ig fraction Preservative: 0.09% Sodium Azide
Concentration:	lot specific
Purification:	Affinity Chromatography on Protein A
Conjugation:	Unconjugated
Storage:	Store undiluted at 2-8°C for one month or (in aliquots) at -20°C for longer. Avoid repeated freezing and thawing.
Stability:	Shelf life: one year from despatch.
Gene Name:	RAB10, member RAS oncogene family
Database Link:	<a href="#">Entrez Gene 10890 Human P61026</a>
Background:	RAB10 belongs to the RAS (see HRAS; MIM 190020) superfamily of small GTPases. RAB proteins localize to exocytic and endocytic compartments and regulate intracellular vesicle trafficking (Bao et al., 1998 [PubMed 9918381]).



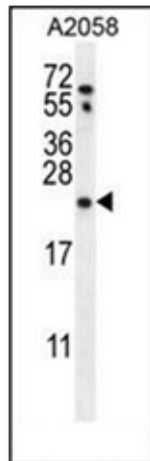
[View online »](#)

Synonyms: Rab-10

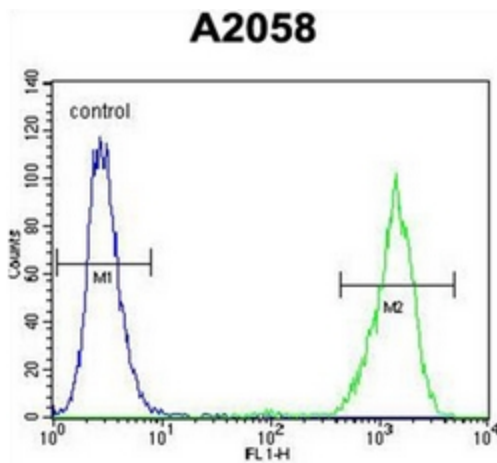
Note: **Molecular Weight:** 22541 Da

Protein Families: Druggable Genome

**Product images:**



western blot analysis of RAB10 Antibody (Center) in A2058 cell line lysates (35ug/lane).This demonstrates the RAB10 antibody detected the RAB10 protein (arrow).



Flow cytometric analysis of A2058 cells using RAB10 Antibody (Center) (right histogram) compared to a negative control cell (left histogram).FITC-conjugated goat-anti-rabbit secondary antibodies were used for the analysis.