

## Product datasheet for **AP53529PU-N**

### **PYCR2 (Center) Rabbit Polyclonal Antibody**

#### **Product data:**

Product Type:	Primary Antibodies
Applications:	IHC, WB
Recommended Dilution:	<b>ELISA:</b> 1/1000. <b>Western Blot:</b> 1/100-1/500. <b>Immunohistochemistry on Paraffin Sections:</b> 1/10-1/50.
Reactivity:	Human
Host:	Rabbit
Isotype:	Ig
Clonality:	Polyclonal
Immunogen:	KLH conjugated synthetic peptide between 96-124 amino acids from the Central region of Human PYCR2
Specificity:	This antibody recognizes Human PYCR2 (Center).
Formulation:	PBS State: Aff - Purified State: Liquid purified Ig fraction Preservative: 0.09% Sodium Azide
Concentration:	lot specific
Purification:	Affinity Chromatography on Protein A
Conjugation:	Unconjugated
Storage:	Store undiluted at 2-8°C for one month or (in aliquots) at -20°C for longer. Avoid repeated freezing and thawing.
Stability:	Shelf life: one year from despatch.
Gene Name:	pyrroline-5-carboxylate reductase family member 2
Database Link:	<a href="#">Entrez Gene 29920 Human Q96C36</a>
Background:	PYCR2 belongs to the pyrroline-5-carboxylate reductase family. Pyrroline-5-carboxylate reductase catalyzes the the NAD(P)H-dependent conversion of proline to pyrroline-5-carboxylate.



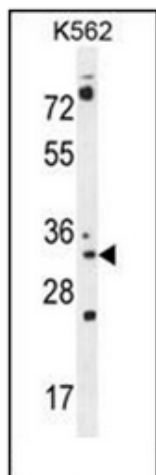
[View online »](#)

**Synonyms:** P5C reductase 2, P5CR 2

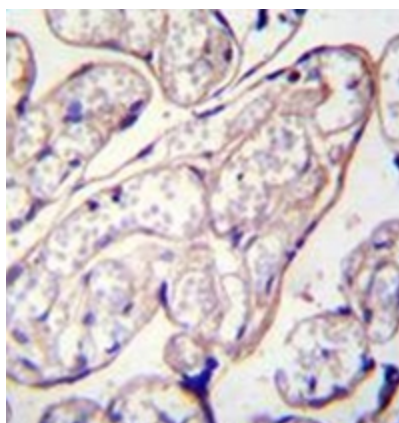
**Note:** **Molecular Weight:** 33637 Da

**Protein Pathways:** Arginine and proline metabolism, Metabolic pathways

**Product images:**



Western blot analysis of PYCR2 Antibody (Center) in K562 cell line lysates (35ug/lane). This demonstrates the PYCR2 antibody detected the PYCR2 protein (arrow).



Formalin fixed and paraffin embedded human placenta tissue reacted with PYCR2 Antibody (Center) followed by peroxidase conjugation of the secondary antibody and DAB staining.