

Product datasheet for **AP53528PU-N**

PYCR1 (C-term) Rabbit Polyclonal Antibody

Product data:

Product Type:	Primary Antibodies
Applications:	FC, IHC, WB
Recommended Dilution:	Flow cytometry: 1/10-1/50. Immunohistochemistry on Paraffin sections: 1/50-1/100. Western blot: 1/100-1/500.
Reactivity:	Human
Host:	Rabbit
Isotype:	Ig
Clonality:	Polyclonal
Immunogen:	Synthetic peptide - KLH conjugated - corresponding to the C-terminal region (between 290-319aa) of human PYCR1.
Specificity:	This antibody recognizes PYCR1 at C-term.
Formulation:	PBS with 0.09% (W/V) Sodium azide State: Aff - Purified State: Liquid purified Ig fraction
Concentration:	lot specific
Purification:	Purified through a Protein A column followed by peptide affinity purification
Conjugation:	Unconjugated
Storage:	Store undiluted at 2-8°C for one month or (in aliquots) at -20°C for longer. Avoid repeated freezing and thawing.
Stability:	Shelf life: one year from despatch.
Gene Name:	pyrroline-5-carboxylate reductase 1
Database Link:	Entrez Gene 5831 Human P32322
Background:	The PYCR1 gene encodes an enzyme that catalyzes the NAD(P)H-dependent conversion of pyrroline-5-carboxylate to proline. The P5C reductase 1 may also play a physiologic role in the generation of NADP(+) in some cell types. The protein forms a homopolymer and localizes to the mitochondrion.



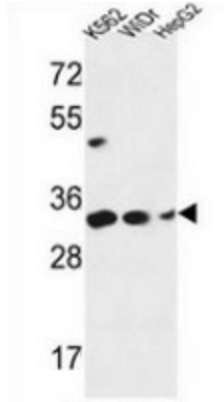
[View online »](#)

Synonyms: P5C reductase 1, P5CR 1

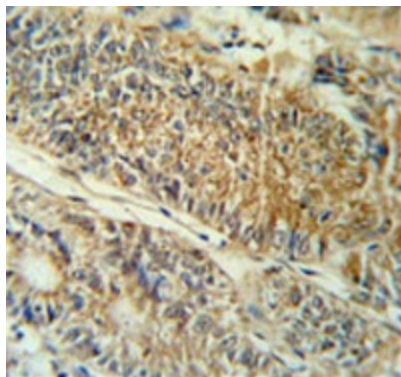
Note: **Molecular Weight:** 33361 Da

Protein Pathways: Arginine and proline metabolism, Metabolic pathways

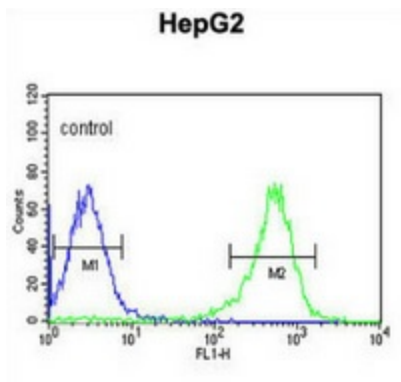
Product images:



Western blot analysis of PYCR1 (arrow) in K562, WiDr, HepG2 cell line lysates (35ug/lane) using PYCR1 antibody. (C-term).



Immunohistochemistry analysis in colon carcinoma (Formalin-fixed, Paraffin-embedded) using PYCR1 antibody. (C-term), followed by peroxidase conjugation of the secondary antibody and DAB staining. This data demonstrates the use of the PYCR1 Antibody (C-term) for immunohistochemistry. Clinical relevance has not been evaluated.



Flow cytometric analysis of HepG2 cells (right histogram) compared to a negative control cell (left histogram) using PYCR1 antibody. (C-term), followed by FITC-conjugated goat-anti-rabbit secondary antibodies.