

Product datasheet for **AP53527PU-N**

PXMP4 (Center) Rabbit Polyclonal Antibody

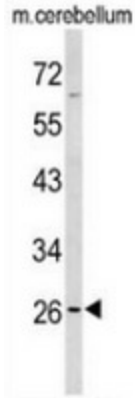
Product data:

Product Type:	Primary Antibodies
Applications:	FC, WB
Recommended Dilution:	Flow cytometry: 1/10-1/50. Western blot: 1/100-1/500. Enzyme immunoassay: 1/1000.
Reactivity:	Human, Mouse
Host:	Rabbit
Isotype:	Ig
Clonality:	Polyclonal
Immunogen:	Synthetic peptide - KLH conjugated - corresponding to the central region (between 134-164aa) of human PXMP4.
Specificity:	This antibody recognizes PXMP4.
Formulation:	PBS with 0.09% (W/V) Sodium azide State: Aff - Purified State: Liquid purified Ig fraction
Concentration:	lot specific
Purification:	Purified through a Protein A column followed by peptide affinity purification
Conjugation:	Unconjugated
Storage:	Store undiluted at 2-8°C for one month or (in aliquots) at -20°C for longer. Avoid repeated freezing and thawing.
Stability:	Shelf life: one year from despatch.
Gene Name:	peroxisomal membrane protein 4
Database Link:	Entrez Gene 59038 Mouse Entrez Gene 11264 Human Q9Y6I8
Background:	PXMP4 belongs to the peroxisomal membrane protein PXMP2/4 family.
Synonyms:	PMP24
Note:	Molecular Weight: 24264 Da

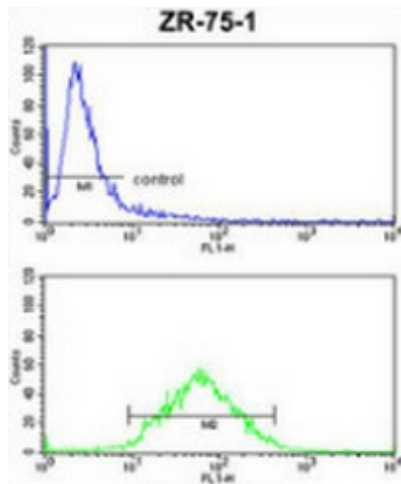


[View online »](#)

Product images:



Western blot analysis of PXMP4 (arrow) in mouse cerebellum tissue lysates (35ug/lane) using PXMP4 antibody.



Flow cytometric analysis of ZR-75-1 cells (bottom histogram) compared to a negative control cell (top histogram) using PXMP4 antibody., followed by FITC-conjugated goat-anti-rabbit secondary antibodies.