

Product datasheet for **AP53523PU-N**

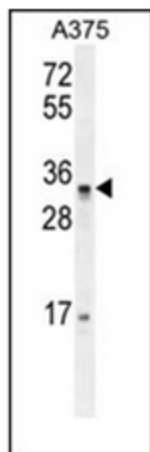
PUSL1 (C-term) Rabbit Polyclonal Antibody

Product data:

Product Type:	Primary Antibodies
Applications:	WB
Recommended Dilution:	ELISA: 1/1000. Western Blot: 1/100-1/500.
Reactivity:	Human
Host:	Rabbit
Isotype:	Ig
Clonality:	Polyclonal
Immunogen:	KLH conjugated synthetic peptide between 213-243 amino acids from the C-terminal region of human PUSL1
Specificity:	This antibody recognizes Human PUSL1 (C-term).
Formulation:	PBS State: Aff - Purified State: Liquid purified Ig fraction Preservative: 0.09% Sodium Azide
Concentration:	lot specific
Purification:	Affinity Chromatography on Protein A
Conjugation:	Unconjugated
Storage:	Store undiluted at 2-8°C for one month or (in aliquots) at -20°C for longer. Avoid repeated freezing and thawing.
Stability:	Shelf life: one year from despatch.
Gene Name:	pseudouridylate synthase-like 1
Database Link:	Entrez Gene 126789 Human Q8N0Z8
Synonyms:	Pseudouridylate synthase-like 1, FLJ90811
Note:	Molecular Weight: 33233 Da



[View online »](#)

Product images:

Western blot analysis of PUSL1 Antibody (C-term) in A375 cell line lysates (35ug/lane). This demonstrates the PUSL1 antibody detected the PUSL1 protein (arrow).