

## Product datasheet for **AP53516PU-N**

### **PTPRN2 (N-term) Rabbit Polyclonal Antibody**

#### **Product data:**

Product Type:	Primary Antibodies
Applications:	WB
Recommended Dilution:	<b>Western blot:</b> 1/100-1/500. Enzyme immunoassay: 1/1000.
Reactivity:	Human
Host:	Rabbit
Isotype:	Ig
Clonality:	Polyclonal
Immunogen:	Synthetic peptide - KLH conjugated - corresponding to the N-terminal region (between 160-189aa) of human PTPRN2.
Specificity:	This antibody recognizes PTPRN2 at N-term.
Formulation:	PBS with 0.09% (W/V) Sodium azide State: Aff - Purified State: Liquid purified Ig fraction
Concentration:	lot specific
Purification:	Purified through a Protein A column followed by peptide affinity purification
Conjugation:	Unconjugated
Storage:	Store undiluted at 2-8°C for one month or (in aliquots) at -20°C for longer. Avoid repeated freezing and thawing.
Stability:	Shelf life: one year from despatch.
Gene Name:	protein tyrosine phosphatase, receptor type N2
Database Link:	<a href="#">Entrez Gene 5799 Human Q92932</a>



[View online »](#)

**Background:**

The protein encoded by the PTPRN2 gene is a member of the protein tyrosine phosphatase (PTP) family. PTPs are known to be signaling molecules that regulate a variety of cellular processes including cell growth, differentiation, mitotic cycle, and oncogenic transformation. This PTP possesses an extracellular region, a single transmembrane region, and a single intracellular catalytic domain, and thus represents a receptor-type PTP. The catalytic domain of this PTP is most closely related to PTPRN/IA-2beta. This PTP and PTPRN are both found to be major autoantigens associated with insulin-dependent diabetes mellitus. Three alternatively spliced transcript variants of this gene, which encode distinct proteins, have been reported.

**Synonyms:**

R-PTP-N2, ICAAR, IAR, IA-2beta, Phogrin, KIAA0387

**Note:**

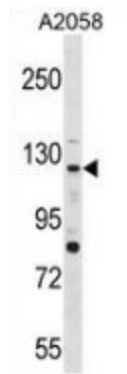
**Molecular Weight:** 111271 Da

**Protein Families:**

Druggable Genome, Phosphatase

**Protein Pathways:**

Type I diabetes mellitus

**Product images:**

Western blot analysis in A2058 cell line lysates (35ug/lane) using PTPRN2 antibody. This demonstrates the PTPRN2 antibody detected the PTPRN2 protein (arrow).