

Product datasheet for **AP53515PU-N**

PTP gamma (PTPRG) (Center) Rabbit Polyclonal Antibody

Product data:

Product Type:	Primary Antibodies
Applications:	WB
Recommended Dilution:	Western blot: 1/100-1/500. Enzyme immunoassay: 1/1000.
Reactivity:	Human, Mouse
Host:	Rabbit
Isotype:	Ig
Clonality:	Polyclonal
Immunogen:	Synthetic peptide - KLH conjugated - corresponding to the central region (between 670-700aa) of human PTPRG / PTPG
Specificity:	This antibody recognizes PTPRG / PTPG.
Formulation:	PBS with 0.09% (W/V) Sodium azide State: Aff - Purified State: Liquid purified Ig fraction
Concentration:	lot specific
Purification:	Purified through a Protein A column followed by peptide affinity purification
Conjugation:	Unconjugated
Storage:	Store undiluted at 2-8°C for one month or (in aliquots) at -20°C for longer. Avoid repeated freezing and thawing.
Stability:	Shelf life: one year from despatch.
Gene Name:	protein tyrosine phosphatase, receptor type G
Database Link:	Entrez Gene 5793 Human P23470



[View online »](#)

Background:

The protein encoded by the PTPRG gene is a member of the protein tyrosine phosphatase (PTP) family. PTPs are known to be signaling molecules that regulate a variety of cellular processes including cell growth, differentiation, mitotic cycle, and oncogenic transformation. This PTP possesses an extracellular region, a single transmembrane region, and two tandem intracytoplasmic catalytic domains, and thus represents a receptor-type PTP. The extracellular region of this PTP contains a carbonic anhydrase-like (CAH) domain, which is also found in the extracellular region of PTPRBETA/ZETA. This gene is located in a chromosomal region that is frequently deleted in renal cell carcinoma and lung carcinoma, thus is thought to be a candidate tumor suppressor gene.

Synonyms:

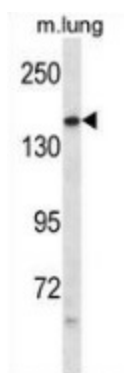
HPTPG; H_RG317H01.1; PTPG; R-PTP-GAMMA; RPTPG

Note:

Molecular Weight: 162003 Da

Protein Families:

Druggable Genome, Phosphatase

Product images:

Western blot analysis in mouse lung tissue lysates (35ug/lane) using PTPRG / PTPG antibody. This demonstrates the PTPRG antibody detected the PTPRG protein (arrow).