

Product datasheet for **AP53513PU-N**

PTPRCAP (Center) Rabbit Polyclonal Antibody

Product data:

Product Type:	Primary Antibodies
Applications:	WB
Recommended Dilution:	Western blot: 1/100-1/500. Enzyme immunoassay: 1/1000.
Reactivity:	Human
Host:	Rabbit
Isotype:	Ig
Clonality:	Polyclonal
Immunogen:	Synthetic peptide - KLH conjugated - corresponding to the central region (between 89-118aa) of human PTPRCAP / LPAP.
Specificity:	This antibody recognizes PTPRCAP / LPAP.
Formulation:	PBS with 0.09% (W/V) Sodium azide State: Aff - Purified State: Liquid purified Ig fraction
Concentration:	lot specific
Purification:	Purified through a Protein A column followed by peptide affinity purification
Conjugation:	Unconjugated
Storage:	Store undiluted at 2-8°C for one month or (in aliquots) at -20°C for longer. Avoid repeated freezing and thawing.
Stability:	Shelf life: one year from despatch.
Gene Name:	Homo sapiens protein tyrosine phosphatase, receptor type C associated protein (PTPRCAP)
Database Link:	Entrez Gene 5790 Human Q14761
Background:	The protein encoded by the PTPRCAP gene was identified as a transmembrane phosphoprotein specifically associated with tyrosine phosphatase PTPRC/CD45, a key regulator of T- and B-lymphocyte activation. The interaction with PTPRC may be required for the stable expression of this protein.
Synonyms:	PTPRC-associated protein, CD45-AP

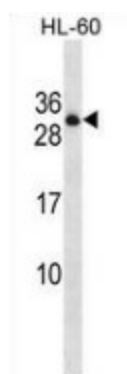


[View online »](#)

Note: **Molecular Weight:** 21196 Da

Protein Families: Phosphatase, Transmembrane

Product images:



Western blot analysis in HL-60 cell line lysates (35ug/lane) using PTPRCAP / LPAP antibody. This demonstrates the PTPRCAP antibody detected the PTPRCAP protein (arrow).