

## Product datasheet for **AP53511PU-N**

### PTPN22 (C-term) Rabbit Polyclonal Antibody

#### Product data:

Product Type:	Primary Antibodies
Applications:	WB
Recommended Dilution:	<b>Western blot:</b> 1/100-1/500. Enzyme immunoassay: 1/1000.
Reactivity:	Human
Host:	Rabbit
Isotype:	Ig
Clonality:	Polyclonal
Immunogen:	Synthetic peptide - KLH conjugated - corresponding to the C-terminal region (between 662-691aa) of human PTPN22.
Specificity:	This antibody recognizes PTPN22 at C-term.
Formulation:	PBS with 0.09% (W/V) Sodium azide State: Aff - Purified State: Liquid purified Ig fraction
Concentration:	lot specific
Purification:	Purified through a Protein A column followed by peptide affinity purification
Conjugation:	Unconjugated
Storage:	Store undiluted at 2-8°C for one month or (in aliquots) at -20°C for longer. Avoid repeated freezing and thawing.
Stability:	Shelf life: one year from despatch.
Gene Name:	protein tyrosine phosphatase, non-receptor type 22
Database Link:	<a href="#">Entrez Gene 26191 Human</a> <a href="#">Q9Y2R2</a>



[View online »](#)

**Background:**

The PTPN22 gene encodes of member of the non-receptor class 4 subfamily of the protein-tyrosine phosphatase family. The encoded protein is a lymphoid-specific intracellular phosphatase that associates with the molecular adapter protein CBL and may be involved in regulating CBL function in the T-cell receptor signaling pathway. Mutations in this gene may be associated with a range of autoimmune disorders including Type 1 Diabetes, rheumatoid arthritis, systemic lupus erythematosus and Graves' disease. Alternatively spliced transcript variants encoding distinct isoforms have been described.

**Synonyms:**

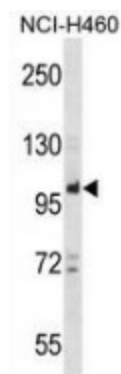
PTPN8, Lymphoid phosphatase, LyP, LYP1, LYP2, PEP

**Note:**

**Molecular Weight:** 91705 Da

**Protein Families:**

Druggable Genome, Phosphatase

**Product images:**

Western blot analysis in NCI-H460 cell line lysates (35ug/lane) using PTPN22 antibody. (C-term). This demonstrates the PTPN22 antibody detected the PTPN22 protein (arrow).