

Product datasheet for **AP53505PU-N**

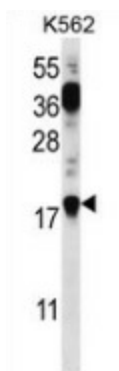
PTMS (C-term) Rabbit Polyclonal Antibody

Product data:

Product Type:	Primary Antibodies
Applications:	WB
Recommended Dilution:	Western blot: 1/100-1/500. Enzyme immunoassay: 1/1000.
Reactivity:	Human
Host:	Rabbit
Isotype:	Ig
Clonality:	Polyclonal
Immunogen:	Synthetic peptide - KLH conjugated - corresponding to the C-terminal region (between 79-110aa) of human Parathymosin / PTMS
Specificity:	This antibody recognizes Parathymosin / PTMS.
Formulation:	PBS with 0.09% (W/V) Sodium azide State: Aff - Purified State: Liquid purified Ig fraction
Concentration:	lot specific
Purification:	Purified through a Protein A column followed by peptide affinity purification
Conjugation:	Unconjugated
Storage:	Store undiluted at 2-8°C for one month or (in aliquots) at -20°C for longer. Avoid repeated freezing and thawing.
Stability:	Shelf life: one year from despatch.
Gene Name:	parathymosin
Database Link:	Entrez Gene 5763 Human P20962
Background:	Parathymosin may mediate immune function by blocking the effect of prothymosin alpha which confers resistance to certain opportunistic infections.
Synonyms:	ParaT; parathymosin
Note:	Molecular Weight: 11530 Da



[View online »](#)

Product images:

Western blot analysis in K562 cell line lysates (35ug/lane) using Parathymosin / PTMS antibody. (Cterm). This demonstrates the PTMS antibody detected the PTMS protein (arrow).