

Product datasheet for **AP53502PU-N**

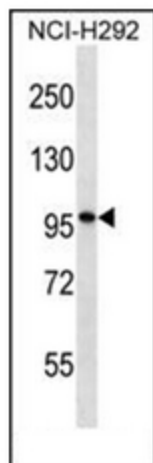
PTCHD2 (DISP3) (N-term) Rabbit Polyclonal Antibody

Product data:

Product Type:	Primary Antibodies
Applications:	WB
Recommended Dilution:	Western Blot: 1/500-1/1000.
Reactivity:	Human
Host:	Rabbit
Isotype:	Ig
Clonality:	Polyclonal
Immunogen:	KLH conjugated synthetic peptide between 178-207 amino acids from the N-terminal region of Human PTHD2.
Specificity:	This antibody recognizes Human PTHD2 (N-term).
Formulation:	PBS containing 0.09% (W/V) Sodium Azide as preservative State: Aff - Purified State: Liquid purified Ig fraction
Concentration:	lot specific
Purification:	Affinity Chromatography on Protein A column followed by peptide affinity purification.
Conjugation:	Unconjugated
Storage:	Store undiluted at 2-8°C for one month or (in aliquots) at -20°C for longer. Avoid repeated freezing and thawing.
Stability:	Shelf life: one year from despatch.
Gene Name:	dispatched RND transporter family member 3
Database Link:	Entrez Gene 57540 Human Q9P2K9
Synonyms:	DISP3, KIAA1337
Note:	Molecular Weight: Isoform 2: 104 kDa (Isoform 1: 153 kDa)
Protein Families:	Transmembrane



[View online »](#)

Product images:

Western blot analysis of PTCHD2 Antibody (N-term) in NCI-H292 cell line lysates (35ug/lane). This demonstrates the PTCHD2 antibody detected the PTCHD2 protein (arrow).