

Product datasheet for **AP53500PU-N**

COX2 (PTGS2) (Center) Rabbit Polyclonal Antibody

Product data:

Product Type:	Primary Antibodies
Applications:	IF, IHC, WB
Recommended Dilution:	ELISA: 1/1000. Western Blot: 1/100-1/500. Immunofluorescence: 1/10-1/50. Immunohistochemistry on Paraffin Sections: 1/10-1/50.
Reactivity:	Human
Host:	Rabbit
Isotype:	Ig
Clonality:	Polyclonal
Immunogen:	KLH conjugated synthetic peptide between 370-399 amino acids from the Central region of Human Cyclooxygenase 2.
Specificity:	This antibody recognizes Human Cyclooxygenase 2 (Center).
Formulation:	PBS State: Aff - Purified State: Liquid purified Ig fraction Preservative: 0.09% (W/V) Sodium Azide
Concentration:	lot specific
Purification:	Protein A column, followed by peptide affinity purification
Conjugation:	Unconjugated
Storage:	Store undiluted at 2-8°C for one month or (in aliquots) at -20°C for longer. Avoid repeated freezing and thawing.
Stability:	Shelf life: one year from despatch.
Gene Name:	prostaglandin-endoperoxide synthase 2
Database Link:	Entrez Gene 5743 Human P35354



[View online »](#)

Background: Prostaglandin-endoperoxide synthase (PTGS), also known as cyclooxygenase, is the key enzyme in prostaglandin biosynthesis, and acts both as a dioxygenase and as a peroxidase. There are two isozymes of PTGS: a constitutive PTGS1 and an inducible PTGS2, which differ in their regulation of expression and tissue distribution. This gene encodes the inducible isozyme. It is regulated by specific stimulatory events, suggesting that it is responsible for the prostanoid biosynthesis involved in inflammation and mitogenesis

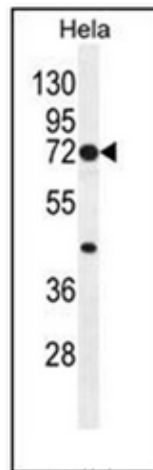
Synonyms: Cyclooxygenase-2, PTGS2, COX2, PHS II, PGH synthase 2, PGHS-2, PGHS2

Note: **Molecular Weight:** 68996 Da

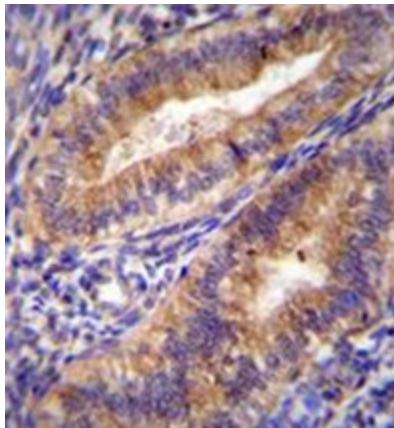
Protein Families: Druggable Genome

Protein Pathways: Arachidonic acid metabolism, Pathways in cancer, Small cell lung cancer, VEGF signaling pathway

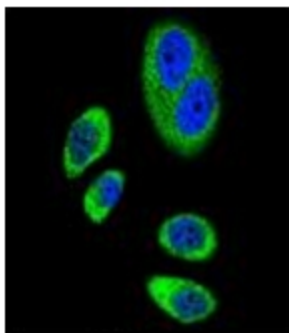
Product images:



Western blot analysis of Cyclooxygenase 2 Antibody (Center) in HeLa cell line lysates (35ug/lane). This demonstrates the PTGS2 antibody detected the PTGS2 protein (arrow).



Formalin fixed and paraffin embedded human uterus tissue stained with Cyclooxygenase 2 Antibody (Center) followed by peroxidase conjugation of the secondary antibody and DAB staining



Confocal immunofluorescent analysis of Cyclooxygenase 2 Antibody (Center) with A549 cell followed by Alexa Fluor[®]489-conjugated goat anti-rabbit IgG (green). DAPI was used to stain the cell nuclear (blue).