

Product datasheet for **AP53498PU-N**

p23 (PTGES3) (Center) Rabbit Polyclonal Antibody

Product data:

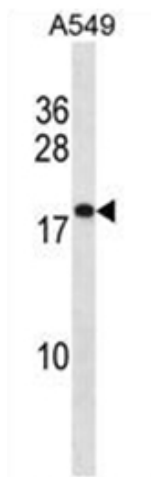
Product Type:	Primary Antibodies
Applications:	WB
Recommended Dilution:	Western Blot: 1/1000
Reactivity:	Human
Host:	Rabbit
Isotype:	Ig
Clonality:	Polyclonal
Immunogen:	KLH conjugated synthetic peptide between 44-73 amino acids from the Central region of Human PTGES3
Specificity:	This antibody recognizes Human PTGES3 (Center).
Formulation:	PBS containing 0.09% (W/V) Sodium Azide as preservative State: Aff - Purified State: Liquid purified Ig fraction
Concentration:	lot specific
Purification:	Affinity Chromatography on Protein A
Conjugation:	Unconjugated
Storage:	Store undiluted at 2-8°C for one month or (in aliquots) at -20°C for longer. Avoid repeated freezing and thawing.
Stability:	Shelf life: one year from despatch.
Gene Name:	prostaglandin E synthase 3
Database Link:	Entrez Gene 10728 Human Q15185
Background:	Molecular chaperone that localizes to genomic response elements in a hormone-dependent manner and disrupts receptor-mediated transcriptional activation, by promoting disassembly of transcriptional regulatory complexes.
Synonyms:	Prostaglandin E synthase 3, cPGES, P23
Note:	Molecular Weight: 18697 Da



[View online »](#)

Protein Families: Druggable Genome, Nuclear Hormone Receptor

Product images:



Western blot analysis of PTGES3 / TEBP Antibody in A549 cell line lysates (35ug/lane). This demonstrates the PTGES3 antibody detected the PTGES3 protein (arrow).