

Product datasheet for **AP53496PU-N**

PTDSS2 (N-term) Rabbit Polyclonal Antibody

Product data:

Product Type:	Primary Antibodies
Applications:	IHC, WB
Recommended Dilution:	Western Blot: 1/1000. Immunohistochemistry on Paraffin Sections: 1/10-1/50
Reactivity:	Human
Host:	Rabbit
Isotype:	Ig
Clonality:	Polyclonal
Immunogen:	KLH conjugated synthetic peptide between 1-30 amino acids from the N-terminal region of Human PTDSS2
Specificity:	This antibody recognizes Human PTDSS2 (N-term).
Formulation:	PBS containing 0.09% (W/V) Sodium Azide as preservative State: Aff - Purified State: Liquid purified Ig fraction
Concentration:	lot specific
Purification:	Affinity Chromatography on Protein A
Conjugation:	Unconjugated
Storage:	Store undiluted at 2-8°C for one month or (in aliquots) at -20°C for longer. Avoid repeated freezing and thawing.
Stability:	Shelf life: one year from despatch.
Gene Name:	phosphatidylserine synthase 2
Database Link:	Entrez Gene 81490 Human Q9BVG9



[View online »](#)

Background: Phosphatidylserine (PS) accounts for 5 to 10% of cell membrane phospholipids. In addition to its role as a structural component, PS is involved in cell signaling, blood coagulation, and apoptosis. PS is synthesized by a calcium-dependent base-exchange reaction catalyzed by PS synthases (EC 2.7.8.8), like PTDSS2, that exchange L-serine for the polar head group of phosphatidylcholine (PC) or phosphatidylethanolamine (PE) (Sturbois-Balcerzak et al., 2001 [PubMed 11084049]).

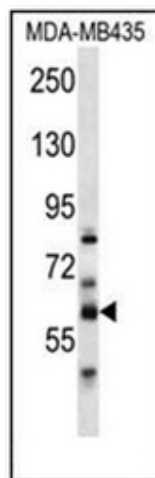
Synonyms: Phosphatidylserine synthase 2, PtdSer synthase 2, PSS-2, PSS2, Serine-exchange enzyme II

Note: **Molecular Weight:** 56253 Da

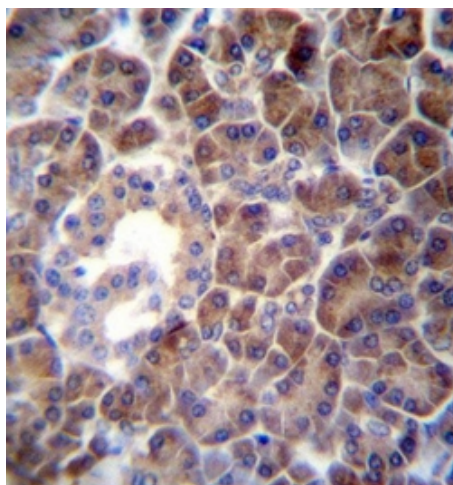
Protein Families: Transmembrane

Protein Pathways: Glycerophospholipid metabolism, Metabolic pathways

Product images:



Western blot analysis of PTDSS2 Antibody (N-term) in MDA-MB435 cell line lysates (35ug/lane). This demonstrates the PTDSS2 antibody detected the PTDSS2 protein (arrow).



Formalin fixed and paraffin embedded human pancreas tissue reacted with PTDSS2 Antibody (N-term) followed by peroxidase conjugation of the secondary antibody and DAB staining.