

Product datasheet for **AP53495PU-N**

PTCHD3 (C-term) Rabbit Polyclonal Antibody

Product data:

Product Type:	Primary Antibodies
Applications:	IHC, WB
Recommended Dilution:	ELISA: 1/1000. Western Blot: 1/1000. IHC: 1/10-1/50.
Reactivity:	Human
Host:	Rabbit
Isotype:	Ig
Clonality:	Polyclonal
Immunogen:	KLH conjugated synthetic peptide between 689-717 amino acids from the C-terminal region of Human PTCHD3
Specificity:	This antibody recognizes PTCHD3 (C-term).
Formulation:	PBS State: Aff - Purified State: Liquid purified Ig fraction Preservative: 0.09% (W/V) Sodium Azide
Concentration:	lot specific
Purification:	Affinity Chromatography on Protein A
Conjugation:	Unconjugated
Storage:	Store the antibody undiluted at 2-8°C for one month or (in aliquots) at -20°C for longer. Avoid repeated freezing and thawing.
Stability:	Shelf life: one year from despatch.
Gene Name:	patched domain containing 3
Database Link:	Entrez Gene 374308 Human Q3KNS1
Background:	May play a role in sperm development or sperm function.
Synonyms:	PTR, Patched-related protein

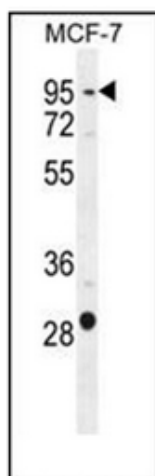


[View online »](#)

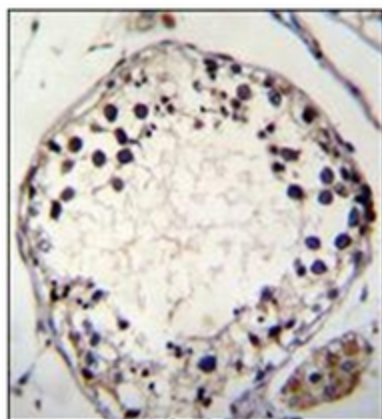
Note: **Molecular Weight:** 86890 Da

Protein Families: Transmembrane

Product images:



Western blot analysis in MCF-7 cell line lysates (35ug/lane) using PTCHD3 Antibody (C-term). This demonstrates the PTCHD3 antibody detected the PTCHD3 protein (arrow).



Immunohistochemistry analysis in formalin fixed and paraffin embedded human testis tissue stained with PTCHD3 Antibody (C-term) followed by peroxidase conjugation of the secondary antibody and DAB staining. This data demonstrates the use of PTCHD3 Antibody (C-term) for immunohistochemistry. Clinical relevance has not been evaluated.