

Product datasheet for **AP53494PU-N**

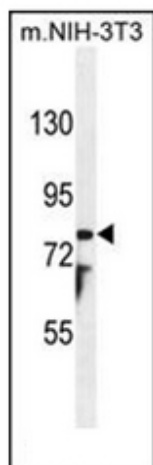
PTCHD1 (Center) Rabbit Polyclonal Antibody

Product data:

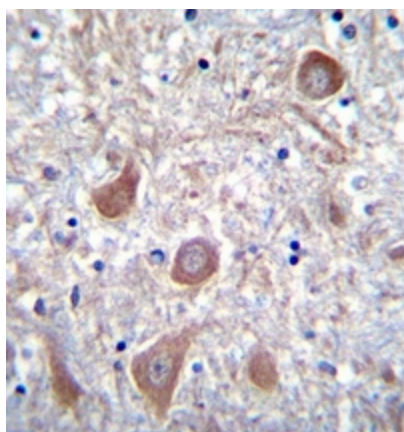
Product Type:	Primary Antibodies
Applications:	IHC, WB
Recommended Dilution:	ELISA: 1/1000. Western Blot: 1/100-1/500. Immunohistochemistry on Paraffin Sections: 1/10-1/50.
Reactivity:	Human, Mouse
Host:	Rabbit
Isotype:	Ig
Clonality:	Polyclonal
Immunogen:	KLH conjugated synthetic peptide between 618-647 amino acids from the Central region of Human PTCHD1
Specificity:	This antibody recognizes Human and Mouse PTCHD1 (Center).
Formulation:	PBS containing 0.09% (W/V) Sodium Azide as preservative State: Aff - Purified State: Liquid purified Ig fraction
Concentration:	lot specific
Purification:	Affinity Chromatography on Protein A
Conjugation:	Unconjugated
Storage:	Store undiluted at 2-8°C for one month or (in aliquots) at -20°C for longer. Avoid repeated freezing and thawing.
Stability:	Shelf life: one year from despatch.
Gene Name:	patched domain containing 1
Database Link:	Entrez Gene 211612 Mouse Entrez Gene 139411 Human Q96NR3
Synonyms:	FLJ30296; MGC149798
Note:	Molecular Weight: 101341 Da
Protein Families:	Druggable Genome, Transmembrane



[View online »](#)

Product images:

Western blot analysis of PTCHD1 Antibody (Center) in mouse NIH-3T3 cell line lysates (35ug/lane). This demonstrates the PTCHD1 antibody detected the PTCHD1 protein (arrow).



Formalin fixed and paraffin embedded human brain tissue reacted with PTCHD1 Antibody (Center) followed by peroxidase conjugation of the secondary antibody and DAB staining.