

Product datasheet for **AP53493PU-N**

PTCD2 (Center) Rabbit Polyclonal Antibody

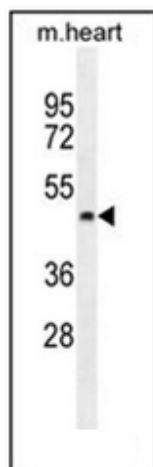
Product data:

Product Type:	Primary Antibodies
Applications:	WB
Recommended Dilution:	ELISA: 1/1000. Western Blot: 1/100-1/500.
Reactivity:	Human, Mouse
Host:	Rabbit
Isotype:	Ig
Clonality:	Polyclonal
Immunogen:	KLH conjugated synthetic peptide between 105-135 amino acids from the Central region of Human PTCD2
Specificity:	This antibody recognizes Human and Mouse PTCD2 (Center).
Formulation:	PBS containing 0.09% (W/V) Sodium Azide as preservative State: Aff - Purified State: Liquid purified Ig fraction
Concentration:	lot specific
Purification:	Affinity Chromatography on Protein A
Conjugation:	Unconjugated
Storage:	Store undiluted at 2-8°C for one month or (in aliquots) at -20°C for longer. Avoid repeated freezing and thawing.
Stability:	Shelf life: one year from despatch.
Gene Name:	Homo sapiens pentatricopeptide repeat domain 2 (PTCD2), transcript variant 1
Database Link:	Entrez Gene 68927 Mouse Entrez Gene 79810 Human Q8WV60
Synonyms:	FLJ12598
Note:	Molecular Weight: 43968 Da



[View online »](#)

Product images:



Western blot analysis of PTCD2 Antibody (Center) in mouse heart tissue lysates (35ug/lane). This demonstrates the PTCD2 antibody detected the PTCD2 protein (arrow).