

## Product datasheet for **AP53492PU-N**

### **PSTPIP1 (N-term) Rabbit Polyclonal Antibody**

#### **Product data:**

Product Type:	Primary Antibodies
Applications:	WB
Recommended Dilution:	<b>ELISA:</b> 1/1000. <b>Western Blot:</b> 1/100-1/500.
Reactivity:	Human
Host:	Rabbit
Isotype:	Ig
Clonality:	Polyclonal
Immunogen:	KLH conjugated synthetic peptide between 88-118 amino acids from the N-terminal region of Human PSTPIP1 / CD28P1
Specificity:	This antibody recognizes Human PSTPIP1 / CD2BP1 (N-term).
Formulation:	PBS State: Aff - Purified State: Liquid purified Ig fraction Preservative: 0.09% Sodium Azide
Concentration:	lot specific
Purification:	Affinity Chromatography on Protein A
Conjugation:	Unconjugated
Storage:	Store undiluted at 2-8°C for one month or (in aliquots) at -20°C for longer. Avoid repeated freezing and thawing.
Stability:	Shelf life: one year from despatch.
Gene Name:	proline-serine-threonine phosphatase interacting protein 1
Database Link:	<a href="#">Entrez Gene 9051 Human</a> <a href="#">O43586</a>



[View online »](#)

**Background:** The protein encoded by this gene binds to the cytoplasmic tail of CD2, an effector of T cell activation and adhesion, negatively affecting CD2-triggered T cell activation. The encoded protein appears to be a scaffold protein and a regulator of the actin cytoskeleton. It has also been shown to bind ABL1, PTPN18, WAS, CD2AP, and PTPN12. Mutations in this gene are a cause of PAPA syndrome.

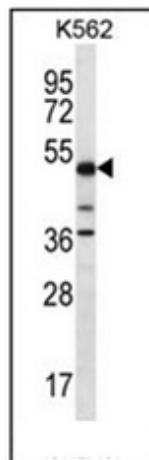
**Synonyms:** PSTPIP, H-PIP, PAPAS, CD2BP1L, CD2BP1S, CD2-binding protein 1

**Note:** **Molecular Weight:** 47591 Da

**Protein Families:** Druggable Genome

**Protein Pathways:** NOD-like receptor signaling pathway

### Product images:



Western blot analysis of STPIP1 / CD2BP1 Antibody (N-term) in K562 cell line lysates (35ug/lane). This demonstrates the PSTPIP1 antibody detected the PSTPIP1 protein (arrow).