

## Product datasheet for **AP53486PU-N**

### PSMB10 (C-term) Rabbit Polyclonal Antibody

#### Product data:

Product Type:	Primary Antibodies
Applications:	WB
Recommended Dilution:	<b>ELISA:</b> 1/1000. <b>Western Blot:</b> 1/100-1/500.
Reactivity:	Human
Host:	Rabbit
Isotype:	Ig
Clonality:	Polyclonal
Immunogen:	KLH conjugated synthetic peptide between 213-242 amino acids from the C-terminal region of Human PSMB10
Specificity:	This antibody recognizes Human PSMB10 (C-term).
Formulation:	PBS containing 0.09% (W/V) Sodium Azide as preservative State: Aff - Purified State: Liquid purified Ig fraction
Concentration:	lot specific
Purification:	Affinity Chromatography on Protein A
Conjugation:	Unconjugated
Storage:	Store undiluted at 2-8°C for one month or (in aliquots) at -20°C for longer. Avoid repeated freezing and thawing.
Stability:	Shelf life: one year from despatch.
Gene Name:	proteasome subunit beta 10
Database Link:	<a href="#">Entrez Gene 5699 Human P40306</a>



[View online »](#)

**Background:**

The proteasome is a multicatalytic proteinase complex with a highly ordered ring-shaped 20S core structure. The core structure is composed of 4 rings of 28 non-identical subunits; 2 rings are composed of 7 alpha subunits and 2 rings are composed of 7 beta subunits. Proteasomes are distributed throughout eukaryotic cells at a high concentration and cleave peptides in an ATP/ubiquitin-dependent process in a non-lysosomal pathway. An essential function of a modified proteasome, the immunoproteasome, is the processing of class I MHC peptides. This gene encodes a member of the proteasome B-type family, also known as the T1B family, that is a 20S core beta subunit. Proteolytic processing is required to generate a mature subunit. Expression of this gene is induced by gamma interferon, and this gene product replaces catalytic subunit 2 (proteasome beta 7 subunit) in the immunoproteasome.

**Synonyms:**

PSMB10, MECL1, Proteasome subunit beta type-10, EC=3.4.25.1, Proteasome subunit beta-2i, Proteasome MECL-1, Macropain subunit MECL-1

**Note:**

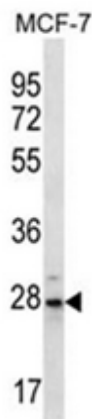
**Molecular Weight:** 28936 Da

**Protein Families:**

Druggable Genome, Protease

**Protein Pathways:**

Proteasome

**Product images:**

Western blot analysis of PSMB10 Antibody (C-term) in MCF-7 cell line lysates (35ug/lane). This demonstrates the PSMB10 antibody detected the PSMB10 protein (arrow).