

Product datasheet for **AP53483PU-N**

PSG9 (Center) Rabbit Polyclonal Antibody

Product data:

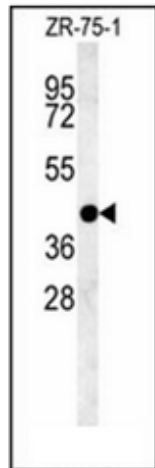
Product Type:	Primary Antibodies
Applications:	IHC, WB
Recommended Dilution:	ELISA: 1/1000. Western Blot: 1/100-1/500. Immunohistochemistry on Paraffin Sections: 1/50-1/100.
Reactivity:	Human
Host:	Rabbit
Isotype:	Ig
Clonality:	Polyclonal
Immunogen:	KLH conjugated synthetic peptide selected from the Central region of human PSG9
Specificity:	This antibody recognizes Human PSG9 / PSG11 (Center).
Formulation:	PBS State: Aff - Purified State: Liquid purified Ig fraction Preservative: 0.09% Sodium Azide
Concentration:	lot specific
Purification:	Affinity Chromatography on Protein A
Conjugation:	Unconjugated
Storage:	Store undiluted at 2-8°C for one month or (in aliquots) at -20°C for longer. Avoid repeated freezing and thawing.
Stability:	Shelf life: one year from despatch.
Gene Name:	pregnancy specific beta-1-glycoprotein 9
Database Link:	Entrez Gene 5678 Human Q00887
Synonyms:	Pregnancy-, PSBG-9, Pregnancy-specific glycoprotein 9, PS34, Pregnancy-specific beta-1 glycoprotein B, PS-beta-B, Pregnancy-specific beta-1-glycoprotein 11, PS-beta-G-11, PSBG-11, Pregnancy-specific glycoprotein 11, Pregnancy-specific glycoprotein 7, PSG7
Note:	Molecular Weight: 48272 Da



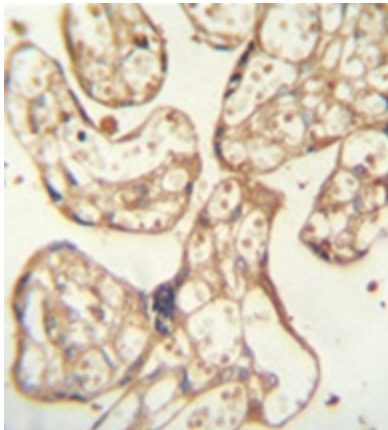
[View online »](#)

Protein Families: Secreted Protein

Product images:



Western blot analysis of PSG9 Antibody (Center) in ZR-75-1 cell line lysates (35ug/lane). This demonstrates the PSG9 antibody detected the PSG9 protein (arrow).



Formalin fixed and paraffin embedded human placenta tissue reacted with PSG9 Antibody (Center) followed by peroxidase conjugation of the secondary antibody and DAB staining.