

Product datasheet for **AP53481PU-N**

PSG3 (N-term) Rabbit Polyclonal Antibody

Product data:

Product Type:	Primary Antibodies
Applications:	WB
Recommended Dilution:	ELISA: 1/1000. Western Blot: 1/100-1/500.
Reactivity:	Human, Mouse
Host:	Rabbit
Isotype:	Ig
Clonality:	Polyclonal
Immunogen:	KLH conjugated synthetic peptide between 29~58 amino acids from the N-terminal region of human PSG3
Specificity:	This antibody recognizes Human and Mouse PSG3 (N-term).
Formulation:	PBS State: Aff - Purified State: Liquid purified Ig fraction Preservative: 0.09% Sodium Azide
Concentration:	lot specific
Purification:	Affinity Chromatography on Protein A
Conjugation:	Unconjugated
Storage:	Store undiluted at 2-8°C for one month or (in aliquots) at -20°C for longer. Avoid repeated freezing and thawing.
Stability:	Shelf life: one year from despatch.
Gene Name:	pregnancy specific beta-1-glycoprotein 3
Database Link:	Entrez Gene 5671 Human Q16557



[View online »](#)

Background:

The human pregnancy-specific glycoproteins (PSGs) are a family of proteins that are synthesized in large amounts by placental trophoblasts and released into the maternal circulation during pregnancy. Molecular cloning and analysis of several PSG genes has indicated that the PSGs form a subgroup of the carcinoembryonic antigen (CEA) gene family, which belongs to the immunoglobulin superfamily of genes. Members of the CEA family consist of a single N domain, with structural similarity to the immunoglobulin variable domains, followed by a variable number of immunoglobulin constant-like A and/or B domains. Most PSGs have an arg-gly-asp (RGD) motif, which has been shown to function as an adhesion recognition signal for several integrins, in the N-terminal domain (summary by Teglund et al., 1994 [PubMed 7851896]). For additional general information about the PSG gene family, see PSG1 (MIM 176390).

Synonyms:

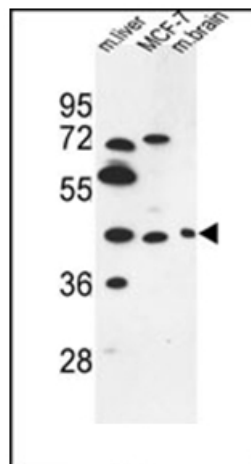
Pregnancy-specific beta-1-glycoprotein 3, PS-beta-G-3, PSBG-3, Pregnancy-specific glycoprotein 3

Note:

Molecular Weight: 47945 Da

Protein Families:

Secreted Protein

Product images:

Western blot analysis of PSG3 Antibody (N-term) in MCF-7 cell line and Mouse liver, brain tissue lysates (35ug/lane). This demonstrates the PSG3 antibody detected the PSG3 protein (arrow).