

Product datasheet for **AP53479PU-N**

Cytohesin 2 (CYTH2) (N-term) Rabbit Polyclonal Antibody

Product data:

Product Type:	Primary Antibodies
Applications:	WB
Recommended Dilution:	ELISA: 1/1000. Western Blot: 1/100-1/500.
Reactivity:	Human, Mouse
Host:	Rabbit
Isotype:	Ig
Clonality:	Polyclonal
Immunogen:	KLH conjugated synthetic peptide between 35-64 amino acids from the N-terminal region of Human Cytohesin 2 (N-term).
Specificity:	This antibody recognizes Mouse Cytohesin 2 (N-term).
Formulation:	PBS containing 0.09% (W/V) Sodium Azide as preservative State: Aff - Purified State: Liquid purified Ig fraction
Concentration:	lot specific
Purification:	Affinity Chromatography on Protein A
Conjugation:	Unconjugated
Storage:	Store undiluted at 2-8°C for one month or (in aliquots) at -20°C for longer. Avoid repeated freezing and thawing.
Stability:	Shelf life: one year from despatch.
Gene Name:	cytohesin 2
Database Link:	Entrez Gene 19158 Mouse Entrez Gene 9266 Human Q99418



[View online »](#)

Background:

The protein encoded by this gene is a member of the PSCD family. Members of this family have identical structural organization that consists of an N-terminal coiled-coil motif, a central Sec7 domain, and a C-terminal pleckstrin homology (PH) domain. The coiled-coil motif is involved in homodimerization, the Sec7 domain contains guanine-nucleotide exchange protein (GEP) activity, and the PH domain interacts with phospholipids and is responsible for association of PSCDs with membranes. Members of this family appear to mediate the regulation of protein sorting and membrane trafficking. The encoded protein exhibits GEP activity in vitro with ARF1, ARF3, and ARF6 and is 83% homologous to CYTH1. Two transcript variants encoding different isoforms have been found for this gene.

Synonyms:

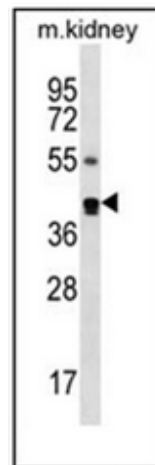
PSCD2, PSCD2L, ARNO, CYTH2

Note:

Molecular Weight: 46546 Da

Protein Families:

Druggable Genome

Product images:

Western blot analysis of PSCD2 Antibody (N-term) in mouse kidney tissue lysates (35ug/lane). This demonstrates the PSCD2 antibody detected the PSCD2 protein (arrow).