

Product datasheet for **AP53477PU-N**

PSAPL1 (N-term) Rabbit Polyclonal Antibody

Product data:

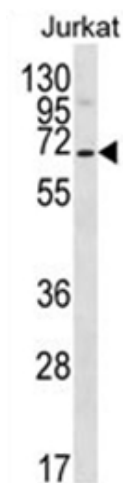
Product Type:	Primary Antibodies
Applications:	WB
Recommended Dilution:	Peptide ELISA: 1/1000. Western Blot: 1/1000. Flow Cytometry: 1/10-1/50.
Reactivity:	Human
Host:	Rabbit
Isotype:	Ig
Clonality:	Polyclonal
Immunogen:	KLH conjugated synthetic peptide between 130-158 amino acids from the N-terminal region of Human PSAPL1
Specificity:	This antibody recognizes Human PSAPL1 (N-term).
Formulation:	PBS containing 0.09% (W/V) Sodium Azide as preservative State: Aff - Purified State: Liquid purified Ig fraction
Concentration:	lot specific
Purification:	Affinity Chromatography on Protein A
Conjugation:	Unconjugated
Storage:	Store undiluted at 2-8°C for one month or (in aliquots) at -20°C for longer. Avoid repeated freezing and thawing.
Stability:	Shelf life: one year from despatch.
Gene Name:	prosaposin-like 1 (gene/pseudogene)
Database Link:	Entrez Gene 768239 Human Q6NUJ1
Background:	PSAPL1 may activate the lysosomal degradation of sphingolipids (By similarity).
Synonyms:	FLJ40379
Note:	Molecular Weight: 56627 Da



[View online »](#)

Protein Pathways: Lysosome

Product images:



Western blot analysis of PSAPL1 Antibody (N-term) in Jurkat cell line lysates (35ug/lane). This demonstrates the PSAPL1 antibody detected the PSAPL1 protein (arrow).