

## Product datasheet for **AP53470PU-N**

### Trypsin (PRSS3) (N-term) Rabbit Polyclonal Antibody

#### Product data:

Product Type:	Primary Antibodies
Applications:	FC, IHC, WB
Recommended Dilution:	<b>Flow cytometry:</b> 1/10-1/50. <b>Immunohistochemistry on Paraffin sections:</b> 1/50-1/100. <b>Western blot:</b> 1/100-1/500. Enzyme immunoassay: 1/1000.
Reactivity:	Human
Host:	Rabbit
Isotype:	Ig
Clonality:	Polyclonal
Immunogen:	Synthetic peptide - KLH conjugated - corresponding to the N-terminal region (between 20-48aa) of human Trypsin-3 / PRSS3
Specificity:	This antibody recognizes Trypsin-3 / PRSS3.
Formulation:	PBS with 0.09% (W/V) Sodium azide State: Aff - Purified State: Liquid purified Ig fraction
Concentration:	lot specific
Purification:	Purified through a Protein A column followed by peptide affinity purification
Conjugation:	Unconjugated
Storage:	Store undiluted at 2-8°C for one month or (in aliquots) at -20°C for longer. Avoid repeated freezing and thawing.
Stability:	Shelf life: one year from despatch.
Gene Name:	protease, serine 3
Database Link:	<a href="#">Entrez Gene 5646 Human P35030</a>



[View online »](#)

**Background:** The PRSS3 gene encodes a trypsinogen, which is a member of the trypsin family of serine proteases. This enzyme is expressed in the brain and pancreas and is resistant to common trypsin inhibitors. It is active on peptide linkages involving the carboxyl group of lysine or arginine. PRSS3 is localized to the locus of T cell receptor beta variable orphans on chromosome 9. Four transcript variants encoding different isoforms have been described for this gene.

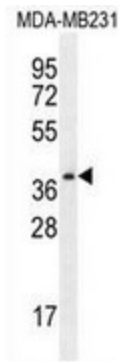
**Synonyms:** PRSS4, TRY3, TRY4, Brain trypsinogen, Mesotrypsinogen, Serine protease 3, Serine protease 4, Trypsin III, Trypsin IV

**Note:** **Molecular Weight:** 32529 Da

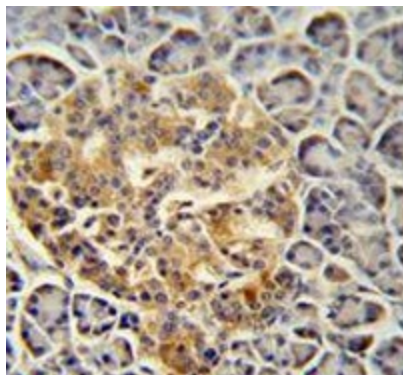
**Protein Families:** Druggable Genome, Protease, Secreted Protein

**Protein Pathways:** Neuroactive ligand-receptor interaction

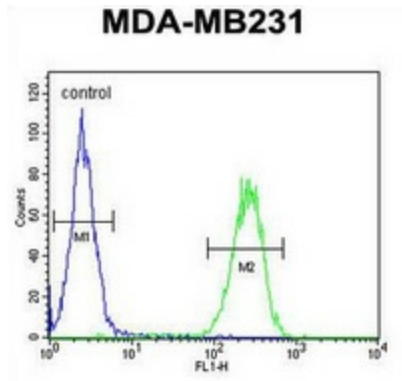
**Product images:**



Western blot analysis in MDA-MB231 cell line lysates (35ug/lane) using Trypsin-3 / PRSS3 antibody. (N-term). This demonstrates the PRSS3 antibody detected the PRSS3 protein (arrow).



Immunohistochemistry analysis in human pancreas tissue (Formalin-fixed, Paraffin-embedded) using Trypsin-3 / PRSS3 antibody. (N-term), followed by peroxidase conjugation of the secondary antibody and DAB staining. This data demonstrates the use of the PRSS3 antibody for IHC; Clinical relevance has not been evaluated.



Flow cytometric analysis of MDA-MB231 cells (right histogram) compared to a negative control cell (left histogram) using Trypsin-3 / PRSS3 antibody. (N-term), followed by FITC-conjugated goat-anti-rabbit secondary antibodies.