

Product datasheet for **AP53468PU-N**

Marapsin (PRSS27) (C-term) Rabbit Polyclonal Antibody

Product data:

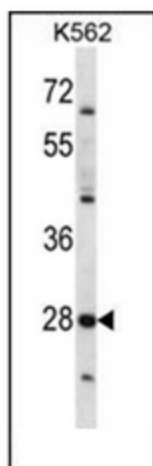
Product Type:	Primary Antibodies
Applications:	WB
Recommended Dilution:	ELISA: 1/1000. Western Blot: 1/100-1/500.
Reactivity:	Human
Host:	Rabbit
Isotype:	Ig
Clonality:	Polyclonal
Immunogen:	KLH conjugated synthetic peptide between 181-211 amino acids from the C-terminal region of human PRSS27.
Specificity:	This antibody recognizes Human PRSS27 (C-term).
Formulation:	PBS containing 0.09% (W/V) sodium azide as preservative State: Aff - Purified State: Liquid purified Ig fraction
Concentration:	lot specific
Purification:	Affinity Chromatography on Protein A
Conjugation:	Unconjugated
Storage:	Store undiluted at 2-8°C for one month or (in aliquots) at -20°C for longer. Avoid repeated freezing and thawing.
Stability:	Shelf life: one year from despatch.
Gene Name:	protease, serine 27
Database Link:	Entrez Gene 83886 Human Q9BQR3
Background:	Pancreasin is a pancreatic tryptic serine peptidase that cleaves peptides after an arginine residue.
Synonyms:	Marapsin, Pancreasin, MPN, Serine protease 27
Note:	Molecular Weight: 31940 Da



[View online »](#)

Protein Families: Druggable Genome, Protease, Secreted Protein

Product images:



Western blot analysis of PRSS27 Antibody (C-term) (in K562 cell line lysates (35ug/lane). This demonstrates the PRSS27 antibody detected the PRSS27 protein (arrow).