

Product datasheet for **AP53465PU-N**

PRSS16 (N-term) Rabbit Polyclonal Antibody

Product data:

Product Type:	Primary Antibodies
Applications:	WB
Recommended Dilution:	This antibody is suitable for Western blotting . The suggested dilution is: 1/100-1/500.
Reactivity:	Human, Mouse
Host:	Rabbit
Isotype:	Ig
Clonality:	Polyclonal
Immunogen:	Synthetic peptide - KLH conjugated - corresponding to the N-terminal region (between 51-81aa) of human PRSS16.
Specificity:	This antibody detects human PRSS16 at N-term.
Formulation:	PBS with 0.09% (W/V) Sodium Azide. State: Aff - Purified State: Liquid purified Ig fraction
Concentration:	lot specific
Purification:	Purified through a protein A column; followed by peptide affinity purification.
Conjugation:	Unconjugated
Storage:	Store the antibody undiluted at 2-8°C for one month or (in aliquots) at -20°C for longer. Avoid repeated freezing and thawing.
Stability:	Shelf life: one year from despatch.
Gene Name:	protease, serine 16
Database Link:	Entrez Gene 54373 Mouse Entrez Gene 10279 Human Q9NQE7



[View online »](#)

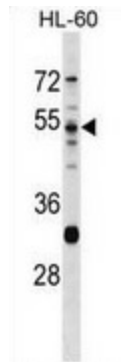
Background: The PRSS16 gene encodes a serine protease expressed exclusively in the thymus. It is thought to play a role in the alternative antigen presenting pathway used by cortical thymic epithelial cells during the positive selection of T cells. The gene is found in the large histone gene cluster on chromosome 6, near the major histocompatibility complex (MHC) class I region. A second transcript variant has been described, but its full length nature has not been determined.

Synonyms: TSSP, Thymus-specific serine protease, Serine protease 16

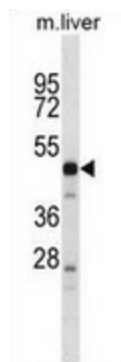
Note: **Molecular Weight:** 55049 Da

Protein Families: Druggable Genome, Protease, Transmembrane

Product images:



Western blot analysis in HL-60 cell line lysates (35ug/lane) using PRSS16 antibody. (N-term). This demonstrates the PRSS16 antibody detected the PRSS16 protein (arrow).



Western blot analysis in mouse liver tissue lysates (35ug/lane) using PRSS16 antibody. (N-term). This demonstrates the PRSS16 antibody detected the PRSS16 protein (arrow).