

Product datasheet for **AP53464PU-N**

Trypsin (PRSS1) (Center) Rabbit Polyclonal Antibody

Product data:

Product Type:	Primary Antibodies
Applications:	WB
Recommended Dilution:	Western blot: 1/1000. Enzyme immunoassay: 1/1000.
Reactivity:	Human
Host:	Rabbit
Isotype:	Ig
Clonality:	Polyclonal
Immunogen:	Synthetic peptide - KLH conjugated - corresponding to the central region (between 81-107 aa) of human Trypsin-1 / PRSS1.
Specificity:	This antibody recognizes Trypsin-1 / PRSS1.
Formulation:	PBS with 0.09% (W/V) Sodium azide State: Aff - Purified State: Liquid purified Ig fraction
Concentration:	lot specific
Purification:	Purified through a Protein A column followed by peptide affinity purification
Conjugation:	Unconjugated
Storage:	Store undiluted at 2-8°C for one month or (in aliquots) at -20°C for longer. Avoid repeated freezing and thawing.
Stability:	Shelf life: one year from despatch.
Gene Name:	protease, serine 1
Database Link:	Entrez Gene 5644 Human P07477
Background:	The PRSS1 gene encodes a trypsinogen, which is a member of the trypsin family of serine proteases. This enzyme is secreted by the pancreas and cleaved to its active form in the small intestine. It is active on peptide linkages involving the carboxyl group of lysine or arginine. Mutations in this gene are associated with hereditary pancreatitis. This gene and several other trypsinogen genes are localized to the T cell receptor beta locus on chromosome 7.



[View online »](#)

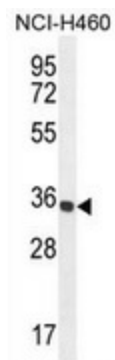
Synonyms: TRP1, TRY1, TRYP1, Trypsin I, Cationic trypsinogen, Beta-trypsin, Serine protease 1

Note: **Molecular Weight:** 26558 Da

Protein Families: Druggable Genome, Secreted Protein

Protein Pathways: Neuroactive ligand-receptor interaction

Product images:



Western blot analysis in NCI-H460 cell line lysates (35ug/lane) using Trypsin-1 / PRSS1 antibody. This demonstrates the PRSS1 antibody detected the PRSS1 protein (arrow).