

## Product datasheet for **AP53463PU-N**

### PRRT1 (Center) Rabbit Polyclonal Antibody

#### Product data:

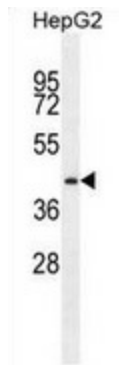
Product Type:	Primary Antibodies
Applications:	FC, WB
Recommended Dilution:	This antibody is suitable for flow cytometry and Western blotting. The suggested dilution is: <b>Flow cytometry:</b> 1/10-1/50. <b>Western blotting:</b> 1/100-1/500.
Reactivity:	Human
Host:	Rabbit
Isotype:	Ig
Clonality:	Polyclonal
Immunogen:	Synthetic peptide - KLH conjugated - corresponding to the central region (between 247-277aa) of human PRRT1.
Specificity:	This antibody detects human PRRT1.
Formulation:	PBS with 0.09% (W/V) Sodium Azide. State: Aff - Purified State: Liquid purified Ig fraction
Concentration:	lot specific
Purification:	Purified through a protein A column; followed by peptide affinity purification.
Conjugation:	Unconjugated
Storage:	Store the antibody undiluted at 2-8°C for one month or (in aliquots) at -20°C for longer. Avoid repeated freezing and thawing.
Stability:	Shelf life: one year from despatch.
Gene Name:	proline rich transmembrane protein 1
Database Link:	<a href="#">Entrez Gene 80863 Human Q99946</a>
Synonyms:	Proline-rich transmembrane protein 1, C6orf31, NG5
Note:	<b>Molecular Weight:</b> 31430 Da



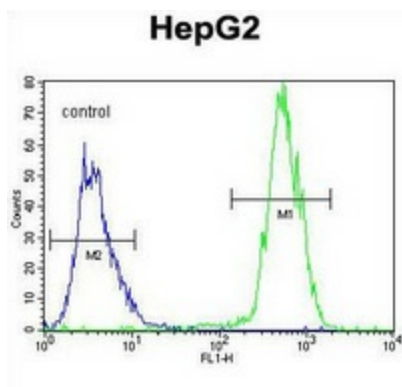
[View online »](#)

Protein Families: Transmembrane

**Product images:**



Western blot analysis in HepG2 cell line lysates (35ug/lane) using PRRT1 antibody. This demonstrates the PRRT1 antibody detected the PRRT1 protein (arrow).



Flow cytometric analysis of HepG2 cells (right histogram) compared to a negative control cell (left histogram) using PRRT1 antibody., followed by FITC-conjugated goat-anti-rabbit secondary antibodies.