

Product datasheet for **AP53462PU-N**

PRRG3 (Center) Rabbit Polyclonal Antibody

Product data:

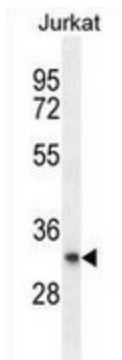
Product Type:	Primary Antibodies
Applications:	FC, WB
Recommended Dilution:	This antibody is suitable for flow cytometry and Western blotting. The suggested dilution is: Flow cytometry: 1/10-1/50. Western blotting: 1/100-1/500.
Reactivity:	Human
Host:	Rabbit
Isotype:	Ig
Clonality:	Polyclonal
Immunogen:	Synthetic peptide - KLH conjugated - corresponding to the central region (between 128-158aa) of human PRRG3.
Specificity:	This antibody detects human PRRG3.
Formulation:	PBS with 0.09% (W/V) Sodium Azide. State: Aff - Purified State: Liquid purified Ig fraction
Concentration:	lot specific
Purification:	Purified through a protein A column; followed by peptide affinity purification.
Conjugation:	Unconjugated
Storage:	Store the antibody undiluted at 2-8°C for one month or (in aliquots) at -20°C for longer. Avoid repeated freezing and thawing.
Stability:	Shelf life: one year from despatch.
Gene Name:	proline rich and Gla domain 3
Database Link:	Entrez Gene 79057 Human Q9BZD7
Synonyms:	PRGP3, TMG3, Proline-rich Gla protein 3
Note:	Molecular Weight: 25875 Da



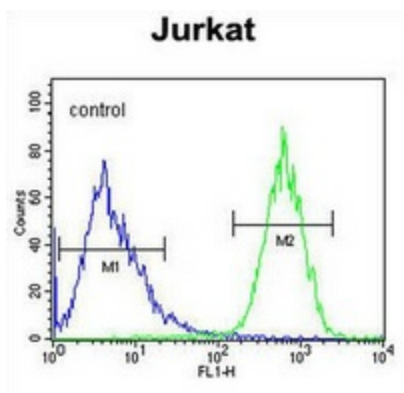
[View online »](#)

Protein Families: Transmembrane

Product images:



Western blot analysis in Jurkat cell line lysates (35ug/lane) using PRRG3 antibody. This demonstrates the PRRG3 antibody detected the PRRG3 protein (arrow).



Flow cytometric analysis of Jurkat cells (right histogram) compared to a negative control cell (left histogram) using PRRG3 antibody, followed by FITC-conjugated goat-anti-rabbit secondary antibodies.