

## Product datasheet for **AP53457PU-N**

### PRR15 (C-term) Rabbit Polyclonal Antibody

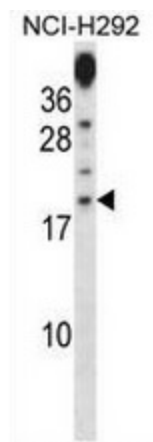
#### Product data:

Product Type:	Primary Antibodies
Applications:	WB
Recommended Dilution:	This antibody is suitable for <b>Western blotting</b> . The suggested dilution is: 1/100-1/500.
Reactivity:	Human
Host:	Rabbit
Isotype:	Ig
Clonality:	Polyclonal
Immunogen:	Synthetic peptide - KLH conjugated - corresponding to the C-terminal region (between 70-100 aa) of human PRR15.
Specificity:	This antibody detects human PRR15 at C-term.
Formulation:	PBS with 0.09% (W/V) Sodium Azide. State: Aff - Purified State: Liquid purified Ig fraction
Concentration:	lot specific
Purification:	Purified through a protein A column, followed by peptide affinity purification.
Conjugation:	Unconjugated
Storage:	Store the antibody undiluted at 2-8°C for one month or (in aliquots) at -20°C for longer. Avoid repeated freezing and thawing.
Stability:	Shelf life: one year from despatch.
Gene Name:	proline rich 15
Database Link:	<a href="#">Entrez Gene 222171 Human Q8IV56</a>
Background:	PRR15 may have a role in proliferation and/or differentiation.
Synonyms:	Proline-rich protein 15
Note:	<b>Molecular Weight:</b> 13715 Da



[View online »](#)

## Product images:



Western blot analysis in NCI-H292 cell line lysates (35ug/lane) using PRR15 antibody. (C-term). This demonstrates the PRR15 antibody detected the PRR15 protein (arrow).