

## Product datasheet for **AP53456PU-N**

### PRPS2 (Center) Rabbit Polyclonal Antibody

#### Product data:

Product Type:	Primary Antibodies
Applications:	WB
Recommended Dilution:	<b>ELISA:</b> 1/1000. <b>Western blot:</b> 1/100 - 1/500.
Reactivity:	Human
Host:	Rabbit
Isotype:	Ig
Clonality:	Polyclonal
Immunogen:	KLH conjugated synthetic peptide between 76-106 amino acids from the Central region of human PRPS2
Specificity:	This antibody reacts to PRPS2.
Formulation:	PBS State: Aff - Purified State: Liquid purified Ig fraction Preservative: 0.09% (W/V) sodium azide
Concentration:	lot specific
Purification:	Affinity chromatography on Protein A
Conjugation:	Unconjugated
Storage:	Store the antibody undiluted at 2-8°C for one month or (in aliquots) at -20°C for longer. Avoid repeated freezing and thawing.
Stability:	Shelf life: one year from despatch.
Predicted Protein Size:	34769 Da
Gene Name:	phosphoribosyl pyrophosphate synthetase 2
Database Link:	<a href="#">Entrez Gene 5634 Human P11908</a>



[View online »](#)

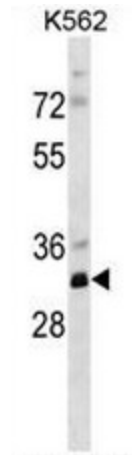
**Background:** PRPS2 is a phosphoribosyl pyrophosphate synthetase that plays a central role in the synthesis of purines and pyrimidines. The encoded protein catalyzes the synthesis of 5-phosphoribosyl 1-pyrophosphate from ATP and D-ribose 5-phosphate. Alternate splicing results in multiple transcript variants.

**Synonyms:** PPRibP, PRS-II

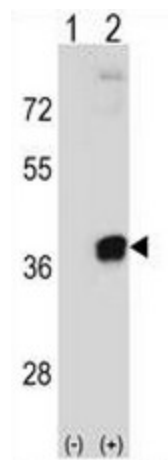
**Protein Families:** Druggable Genome

**Protein Pathways:** Metabolic pathways, Pentose phosphate pathway, Purine metabolism

**Product images:**



PRPS2 Antibody (Center) western blot analysis in K562 cell line lysates (35ug/lane). This demonstrates the PRPS2 antibody detected the PRPS2 protein (arrow).



Western blot analysis of PRPS2 (arrow) using rabbit polyclonal PRPS2 Antibody (Center). 293 cell lysates (2 ug/lane) either nontransfected (Lane 1) or transiently transfected (Lane 2) with the PRPS2 gene.