

Product datasheet for **AP53449PU-N**

PRODH2 (Center) Rabbit Polyclonal Antibody

Product data:

Product Type:	Primary Antibodies
Applications:	WB
Recommended Dilution:	ELISA: 1/1000. Western Blot: 1/100 - 1/500.
Reactivity:	Human
Host:	Rabbit
Isotype:	Ig
Clonality:	Polyclonal
Immunogen:	KLH conjugated synthetic peptide between 171-200 amino acids from the Central region of human PRODH2
Specificity:	This antibody reacts to PRODH2.
Formulation:	PBS State: Aff - Purified State: Liquid purified Ig fraction Preservative: 0.09% (W/V) sodium azide
Concentration:	lot specific
Purification:	Affinity chromatography on Protein A
Conjugation:	Unconjugated
Storage:	Store the antibody undiluted at 2-8°C for one month or (in aliquots) at -20°C for longer. Avoid repeated freezing and thawing.
Stability:	Shelf life: one year from despatch.
Predicted Protein Size:	58871 Da
Gene Name:	proline dehydrogenase 2
Database Link:	Entrez Gene 58510 Human Q9UF12
Background:	The protein encoded by this gene is similar to proline dehydrogenase (oxidase) 1, a mitochondrial enzyme which catalyzes the first step in proline catabolism. The function of this protein has not been determined.

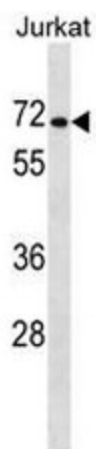


[View online »](#)

Synonyms: Probable proline oxidase 2, HsPOX1

Protein Pathways: Arginine and proline metabolism, Metabolic pathways

Product images:



PRODH2 Antibody (Center) western blot analysis in Jurkat cell line lysates (35ug/lane). This demonstrates the PRODH2 antibody detected the PRODH2 protein (arrow).