

## Product datasheet for **AP53440PU-N**

### PREX1 (Center) Rabbit Polyclonal Antibody

#### Product data:

Product Type:	Primary Antibodies
Applications:	WB
Recommended Dilution:	<b>ELISA:</b> 1/1000. <b>Western Blot:</b> 1/100 - 1/500.
Reactivity:	Human
Host:	Rabbit
Isotype:	Ig
Clonality:	Polyclonal
Immunogen:	KLH conjugated synthetic peptide between 573~602 amino acids from the Central region of human PREX1
Specificity:	This antibody reacts to PREX1.
Formulation:	PBS State: Aff - Purified State: Liquid purified Ig fraction Preservative: 0.09% (W/V) sodium azide
Concentration:	lot specific
Purification:	Affinity chromatography on Protein A
Conjugation:	Unconjugated
Storage:	Store the antibody undiluted at 2-8°C for one month or (in aliquots) at -20°C for longer. Avoid repeated freezing and thawing.
Stability:	Shelf life: one year from despatch.
Predicted Protein Size:	186203 Da
Gene Name:	phosphatidylinositol-3,4,5-trisphosphate dependent Rac exchange factor 1
Database Link:	<a href="#">Entrez Gene 57580 Human</a> <a href="#">Q8TCU6</a>



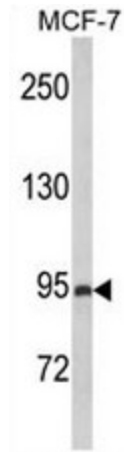
[View online »](#)

**Background:** The protein encoded by this gene acts as a guanine nucleotide exchange factor for the RHO family of small GTP-binding proteins (RACs). It has been shown to bind to and activate RAC1 by exchanging bound GDP for free GTP. The encoded protein, which is found mainly in the cytoplasm, is activated by phosphatidylinositol-3,4,5-trisphosphate and the beta-gamma subunits of heterotrimeric G proteins.

**Synonyms:** P-Rex1, KIAA1415

**Protein Pathways:** Chemokine signaling pathway

**Product images:**



Western blot analysis of PREX1 Antibody (Center) in MCF-7 cell line lysates (35ug/lane). PREX1 (arrow) was detected using the purified Pab.