

## Product datasheet for **AP53438PU-N**

### PRDM8 (N-term) Rabbit Polyclonal Antibody

#### Product data:

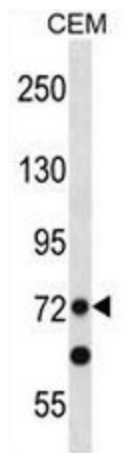
Product Type:	Primary Antibodies
Applications:	WB
Recommended Dilution:	<b>ELISA:</b> 1/1000. <b>Western Blot:</b> 1/100 - 1/500.
Reactivity:	Human
Host:	Rabbit
Isotype:	Ig
Clonality:	Polyclonal
Immunogen:	KLH conjugated synthetic peptide between 74-102 amino acids from the N-terminal region of human PRDM8
Specificity:	This antibody reacts to PRDM8.
Formulation:	PBS State: Aff - Purified State: Liquid purified Ig fraction Preservative: 0.09% (W/V) sodium azide
Concentration:	lot specific
Purification:	Affinity chromatography on Protein A
Conjugation:	Unconjugated
Storage:	Store the antibody undiluted at 2-8°C for one month or (in aliquots) at -20°C for longer. Avoid repeated freezing and thawing.
Stability:	Shelf life: one year from despatch.
Predicted Protein Size:	71663 Da
Gene Name:	PR domain 8
Database Link:	<a href="#">Entrez Gene 56978 Human</a> <a href="#">Q9NQV8</a>
Background:	PRDM8 may be involved in transcriptional regulation.
Synonyms:	PFM5



[View online »](#)

Protein Families: Druggable Genome, Transcription Factors

### Product images:



PRDM8 Antibody (N-term) western blot analysis in CEM cell line lysates (35ug/lane). This demonstrates the PRDM8 antibody detected the PRDM8 protein (arrow).