

## Product datasheet for **AP53436PU-N**

### PRAMEF8 (C-term) Rabbit Polyclonal Antibody

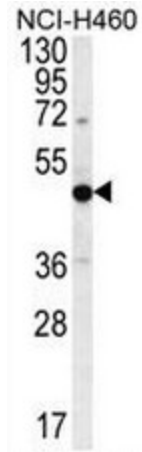
#### Product data:

Product Type:	Primary Antibodies
Applications:	FC, IHC, WB
Recommended Dilution:	<b>ELISA:</b> 1/1000. <b>Western Blot:</b> 1/100 - 1/500. <b>Immunohistochemistry on paraffin sections:</b> 1/10 - 1/50. <b>Flow Cytometry:</b> 1/10 - 1/50.
Reactivity:	Human
Host:	Rabbit
Isotype:	Ig
Clonality:	Polyclonal
Immunogen:	KLH conjugated synthetic peptide between 417-447 amino acids from the C-terminal region of human PRAMEF8
Specificity:	This antibody reacts to PRAMEF8.
Formulation:	PBS State: Aff - Purified State: Liquid purified Ig fraction Preservative: 0.09% (W/V) sodium azide
Concentration:	lot specific
Purification:	Affinity chromatography on Protein A
Conjugation:	Unconjugated
Storage:	Store the antibody undiluted at 2-8°C for one month or (in aliquots) at -20°C for longer. Avoid repeated freezing and thawing.
Stability:	Shelf life: one year from despatch.
Predicted Protein Size:	53669 Da
Gene Name:	PRAME family member 8
Database Link:	<a href="#">Entrez Gene 391002 Human Q5VWM4</a>
Synonyms:	PRAME family member 8

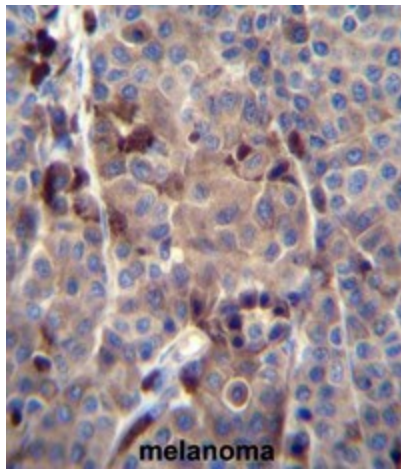


[View online »](#)

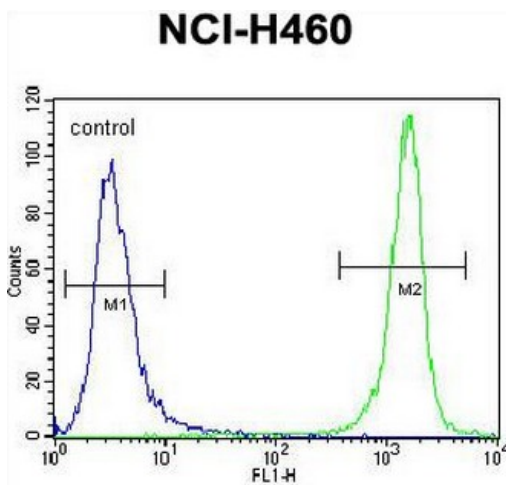
Product images:



PRAMEF8 Antibody (C-term) western blot analysis in NCI-H460 cell line lysates (35ug/lane). This demonstrates the PRAMEF8 antibody detected the PRAMEF8 protein (arrow).



PRAMEF8 Antibody (C-term) immunohistochemistry analysis in formalin fixed and paraffin embedded human melanoma tissue followed by peroxidase conjugation of the secondary antibody and DAB staining. This data demonstrates the use of PRAMEF8 Antibody (C-term) for immunohistochemistry. Clinical relevance has not been evaluated.



PRAMEF8 Antibody (C-term) flow cytometric analysis of NCI-H460 cells (right histogram) compared to a negative control cell (left histogram). FITC-conjugated goat-anti-rabbit secondary antibodies were used for the analysis.