

Product datasheet for **AP53434PU-N**

PRAMEF3 (C-term) Rabbit Polyclonal Antibody

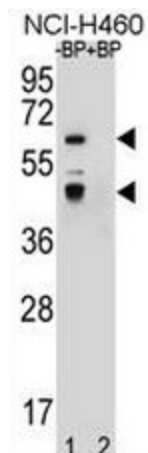
Product data:

Product Type:	Primary Antibodies
Applications:	IHC, WB
Recommended Dilution:	ELISA: 1/1000. Western Blot: 1/100 - 1/500. Immunohistochemistry on paraffin sections: 1/10 - 1/50.
Reactivity:	Human
Host:	Rabbit
Isotype:	Ig
Clonality:	Polyclonal
Immunogen:	KLH conjugated synthetic peptide between 427-457 amino acids from the C-terminal region of human PRAMEF3
Specificity:	This antibody reacts to PRAMEF3.
Formulation:	PBS State: Aff - Purified State: Liquid purified Ig fraction Preservative: 0.09% (W/V) sodium azide
Concentration:	lot specific
Purification:	Affinity chromatography on Protein A
Conjugation:	Unconjugated
Storage:	Store the antibody undiluted at 2-8°C for one month or (in aliquots) at -20°C for longer. Avoid repeated freezing and thawing.
Stability:	Shelf life: one year from despatch.
Predicted Protein Size:	55198 Da
Database Link:	Q5TYW8
Synonyms:	PRAME family member 3

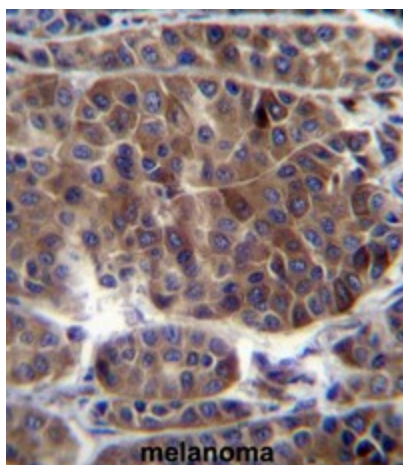


[View online »](#)

Product images:



Western blot analysis of PRAMEF3 Antibody (C-term) Pab (Cat. #AP53434PU-N) pre-incubated without (lane 1) and with (lane 2) blocking peptide in NCI-H460 cell line lysate. PRAMEF3 Antibody (C-term) (arrow) was detected using the purified Pab (1/60 - 1/250 dil)



PRAMEF3 Antibody (C-term) (Cat. #AP53434PU-N) immunohistochemistry analysis in formalin fixed and paraffin embedded human melanoma followed by peroxidase conjugation of the secondary antibody and DAB staining. This data demonstrates the use of PRAMEF3 Antibody