

Product datasheet for **AP53432PU-N**

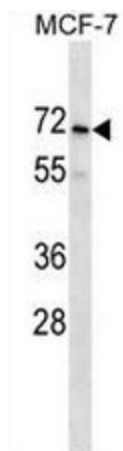
PRAMEF2 (C-term) Rabbit Polyclonal Antibody

Product data:

| | |
|-------------------------|--|
| Product Type: | Primary Antibodies |
| Applications: | WB |
| Recommended Dilution: | ELISA: 1/1000. Western Blot: 1/100 - 1/500. |
| Reactivity: | Human |
| Host: | Rabbit |
| Isotype: | Ig |
| Clonality: | Polyclonal |
| Immunogen: | KLH conjugated synthetic peptide between 387-417 amino acids from the C-terminal region of human PRAMEF2 |
| Specificity: | This antibody reacts to PRAMEF2. |
| Formulation: | PBS State: Aff - Purified State: Liquid purified Ig fraction Preservative: 0.09% (W/V) sodium azide |
| Concentration: | lot specific |
| Purification: | Affinity chromatography on Protein A |
| Conjugation: | Unconjugated |
| Storage: | Store the antibody undiluted at 2-8°C for one month or (in aliquots) at -20°C for longer. Avoid repeated freezing and thawing. |
| Stability: | Shelf life: one year from despatch. |
| Predicted Protein Size: | 54872 Da |
| Gene Name: | PRAME family member 2 |
| Database Link: | Entrez Gene 65122 Human O60811 |
| Synonyms: | PRAME family member 2 |



[View online »](#)

Product images:

PRAMEF2 Antibody (C-term) western blot analysis in MCF-7 cell line lysates (35ug/lane). This demonstrates the PRAMEF2 antibody detected the PRAMEF2 protein (arrow).