

Product datasheet for **AP53431PU-N**

PRAMEF12 (Center) Rabbit Polyclonal Antibody

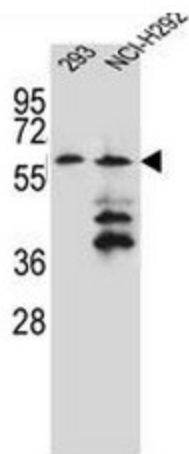
Product data:

Product Type:	Primary Antibodies
Applications:	WB
Recommended Dilution:	ELISA: 1/1000. Western Blot: 1/100 - 1/500.
Reactivity:	Human
Host:	Rabbit
Isotype:	Ig
Clonality:	Polyclonal
Immunogen:	KLH conjugated synthetic peptide between 114-144 amino acids from the Central region of human PRAMEF12
Specificity:	This antibody reacts to PRAMEF12.
Formulation:	PBS State: Aff - Purified State: Liquid purified Ig fraction Preservative: 0.09% (W/V) sodium azide
Concentration:	lot specific
Purification:	Affinity chromatography on Protein A
Conjugation:	Unconjugated
Storage:	Store the antibody undiluted at 2-8°C for one month or (in aliquots) at -20°C for longer. Avoid repeated freezing and thawing.
Stability:	Shelf life: one year from despatch.
Predicted Protein Size:	54663 Da
Gene Name:	PRAME family member 12
Database Link:	Entrez Gene 390999 Human O95522
Synonyms:	PRAME family member 12



[View online »](#)

Product images:



PRAMEF12 Antibody (Center) western blot analysis in 293, NCI-H292 cell line lysates (35ug/lane). This demonstrates the PRAMEF12 antibody detected the PRAMEF12 protein (arrow).