

## Product datasheet for **AP53428PU-N**

### **PRPF38A (C-term) Rabbit Polyclonal Antibody**

#### **Product data:**

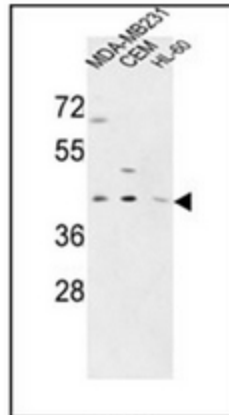
Product Type:	Primary Antibodies
Applications:	FC, IHC, WB
Recommended Dilution:	<b>ELISA:</b> 1/1000 <b>Western Blot:</b> 1/100-1/500. <b>Flow Cytometry:</b> 1/10-1/50. <b>Immunohistochemistry on Paraffin Sections:</b> 1/50-1/100.
Reactivity:	Human
Host:	Rabbit
Isotype:	Ig
Clonality:	Polyclonal
Immunogen:	KLH conjugated synthetic peptide between 283~312 amino acids from the C-terminal region of Human PRPF38A
Specificity:	This antibody recognizes Human PRPF38A (C-term).
Formulation:	PBS containing 0.09% (W/V) Sodium Azide as preservative State: Aff - Purified State: Liquid purified Ig fraction
Concentration:	lot specific
Purification:	Affinity Chromatography on Protein A
Conjugation:	Unconjugated
Storage:	Store undiluted at 2-8°C for one month or (in aliquots) at -20°C for longer. Avoid repeated freezing and thawing.
Stability:	Shelf life: one year from despatch.
Gene Name:	pre-mRNA processing factor 38A
Database Link:	<a href="#">Entrez Gene 84950 Human Q8NAV1</a>
Synonyms:	Pre-mRNA-splicing factor 38A
Note:	<b>Molecular Weight:</b> 37477 Da



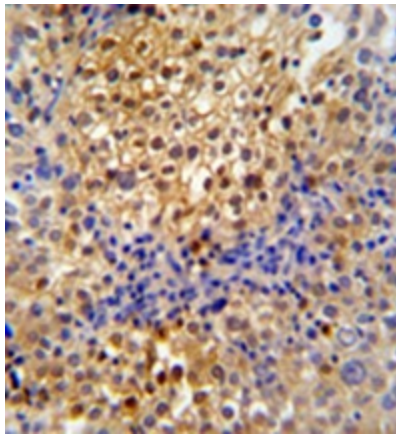
[View online »](#)

Protein Pathways: Spliceosome

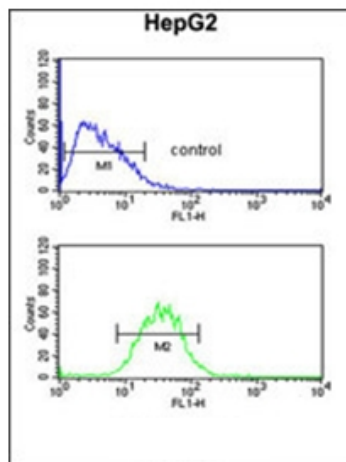
**Product images:**



Western blot analysis of PRPF38A Antibody (C-term) in MDA-MB231, CEM, HL-60 cell line lysates (35ug/lane). This demonstrates the PR38A antibody detected the PR38A protein (arrow).



Formalin fixed and paraffin embedded human cervix carcinoma reacted with PRPF38A Antibody (C-term) followed by peroxidase conjugation of the secondary antibody and DAB staining



Flow cytometric analysis of HepG2 cells using PRPF38A Antibody (C-term) (bottom histogram) compared to a negative control cell (top histogram). FITC-conjugated goat-anti-rabbit secondary antibodies were used for the analysis.