

Product datasheet for **AP53427PU-N**

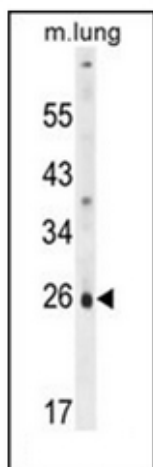
SLC66A2 (Center) Rabbit Polyclonal Antibody

Product data:

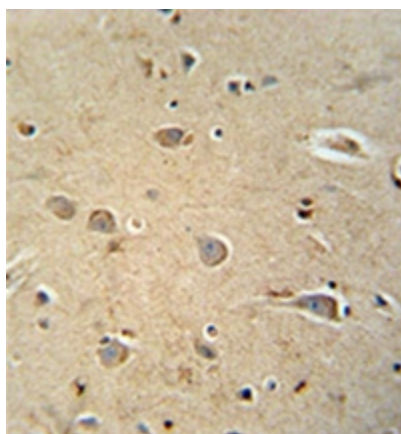
Product Type:	Primary Antibodies
Applications:	IHC, WB
Recommended Dilution:	ELISA: 1/1000. Western Blot: 1/100-1/500. Immunohistochemistry on Paraffin Sections: 1/50-1/100.
Reactivity:	Human, Mouse
Host:	Rabbit
Isotype:	Ig
Clonality:	Polyclonal
Immunogen:	KLH conjugated synthetic peptide between 103-132 amino acids from the Central region of Human PQLC1
Specificity:	This antibody recognizes Human and Mouse PQLC1 (Center).
Formulation:	PBS containing 0.09% (W/V) Sodium Azide as preservative State: Aff - Purified State: Liquid purified Ig fraction
Concentration:	lot specific
Purification:	Affinity Chromatography on Protein A
Conjugation:	Unconjugated
Storage:	Store undiluted at 2-8°C for one month or (in aliquots) at -20°C for longer. Avoid repeated freezing and thawing.
Stability:	Shelf life: one year from despatch.
Gene Name:	PQ loop repeat containing 1
Database Link:	Entrez Gene 80148 Human Q8N2U9
Synonyms:	FLJ22378
Note:	Molecular Weight: 30478 Da
Protein Families:	Transmembrane



[View online »](#)

Product images:

Western blot analysis of PQLC1 Antibody in mouse lung tissue lysates (35ug/lane). This demonstrates the PQLC1 antibody detected the PQLC1 protein (arrow).



Formalin fixed and paraffin embedded human brain tissue reacted with PQLC1 Antibody followed by peroxidase conjugation of the secondary antibody and DAB staining.