

Product datasheet for **AP53426PU-N**

PPRC1 (C-term) Rabbit Polyclonal Antibody

Product data:

Product Type:	Primary Antibodies
Applications:	IHC, WB
Recommended Dilution:	ELISA: 1/1000. Western Blot: 1/100-1/500. Immunohistochemistry on Paraffin Sections: 1/50-1/100.
Reactivity:	Human
Host:	Rabbit
Isotype:	Ig
Clonality:	Polyclonal
Immunogen:	KLH conjugated synthetic peptide between 1636-1664 amino acids from the C-terminal region of Human PPRC1
Specificity:	This antibody recognizes Human PPRC1 (C-term).
Formulation:	PBS containing 0.09% (W/V) Sodium Azide as preservative State: Aff - Purified State: Liquid purified Ig fraction
Concentration:	lot specific
Purification:	Affinity Chromatography on Protein A
Conjugation:	Unconjugated
Storage:	Store undiluted at 2-8°C for one month or (in aliquots) at -20°C for longer. Avoid repeated freezing and thawing.
Stability:	Shelf life: one year from despatch.
Gene Name:	peroxisome proliferator-activated receptor gamma, coactivator-related 1
Database Link:	Entrez Gene 23082 Human Q5VV67



[View online »](#)

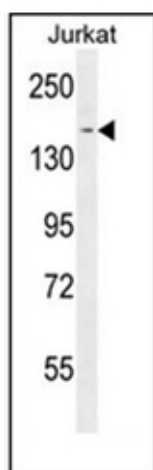
Background: The protein encoded by this gene is similar to PPAR-gamma coactivator 1 (PPARGC1/PGC-1), a protein that can activate mitochondrial biogenesis in part through a direct interaction with nuclear respiratory factor 1 (NRF1). This protein has been shown to interact with NRF1. It is thought to be a functional relative of PPARGC1 that activates mitochondrial biogenesis through NRF1 in response to proliferative signals.

Synonyms: PRC, KIAA0595

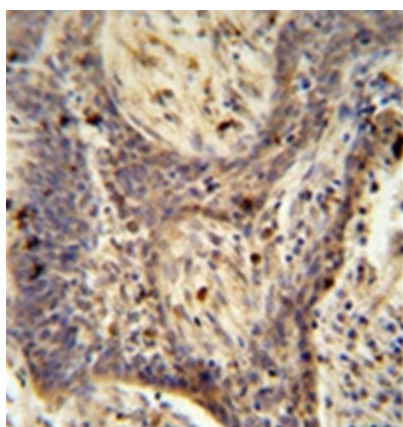
Note: **Molecular Weight:** 177544 Da

Protein Families: Druggable Genome

Product images:



Western blot analysis of PPRC1 Antibody (C-term) in Jurkat cell line lysates (35ug/lane). This demonstrates the PPRC1 antibody detected the PPRC1 protein (arrow).



Formalin fixed and paraffin embedded human lung carcinoma reacted with PPRC1 Antibody (C-term) followed by peroxidase conjugation of the secondary antibody and DAB staining.