

Product datasheet for **AP53423PU-N**

PPP3R2 (N-term) Rabbit Polyclonal Antibody

Product data:

Product Type:	Primary Antibodies
Applications:	FC, IHC, WB
Recommended Dilution:	ELISA: 1/1000. Western Blot: 1/100-1/500. Flow Cytometry: 1/10-1/50. Immunohistochemistry on Paraffin Sections: 1/50-1/100.
Reactivity:	Human, Mouse
Host:	Rabbit
Isotype:	Ig
Clonality:	Polyclonal
Immunogen:	KLH conjugated synthetic peptide between 9~29 amino acids from the N-terminal region of Human PPP3R2 / CBLP
Specificity:	This antibody recognizes Human and Mouse PPP3R2 / CBLP (N-term).
Formulation:	PBS containing 0.09% (W/V) Sodium Azide as preservative State: Aff - Purified State: Liquid purified Ig fraction
Concentration:	lot specific
Purification:	Affinity Chromatography on Protein A
Conjugation:	Unconjugated
Storage:	Store undiluted at 2-8°C for one month or (in aliquots) at -20°C for longer. Avoid repeated freezing and thawing.
Stability:	Shelf life: one year from despatch.
Gene Name:	protein phosphatase 3 regulatory subunit B, beta
Database Link:	Entrez Gene 5535 Human Q96LZ3
Background:	PPP3R2 is regulatory subunit of calcineurin, a calcium-dependent, calmodulin stimulated protein phosphatase. This protein confers calcium sensitivity (By similarity).



[View online »](#)

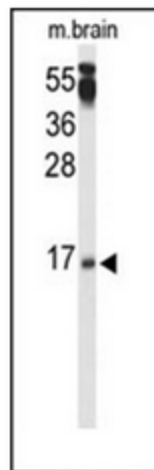
Synonyms: Protein phosphatase 2B regulatory subunit 2, Calcineurin subunit B type 2, Calcineurin B-like protein, CBLP, Calcineurin BII, CNBII

Note: **Molecular Weight:** 19533 Da

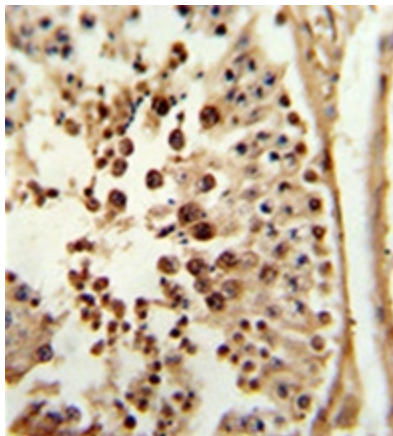
Protein Families: Phosphatase

Protein Pathways: Alzheimer's disease, Amyotrophic lateral sclerosis (ALS), Apoptosis, Axon guidance, B cell receptor signaling pathway, Calcium signaling pathway, Long-term potentiation, MAPK signaling pathway, Natural killer cell mediated cytotoxicity, Oocyte meiosis, T cell receptor signaling pathway, VEGF signaling pathway, Wnt signaling pathway

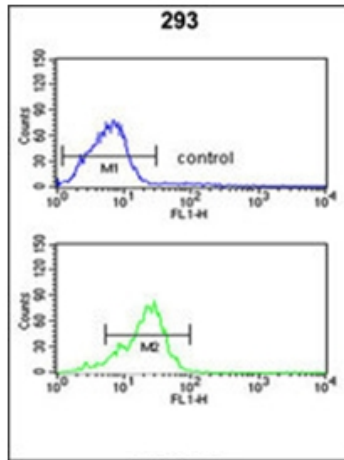
Product images:



Western blot analysis of PPP3R2 / CBLP Antibody (N-term) in mouse brain tissue lysates (35ug/lane). PPP3R2 (arrow) was detected using the purified Pab.



Formalin-fixed and paraffin-embedded human testis tissue reacted with PPP3R2 / CBLP Antibody (N-term), which was peroxidase-conjugated to the secondary antibody, followed by DAB staining.



Flow cytometric analysis of 293 cells using PPP3R2 / CBLP Antibody (N-term) (bottom histogram) compared to a negative control cell (top histogram). FITC-conjugated goat-anti-rabbit secondary antibodies were used for the analysis.