

## Product datasheet for **AP53420PU-N**

### PPP2R5A (C-term) Rabbit Polyclonal Antibody

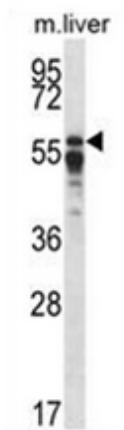
#### Product data:

Product Type:	Primary Antibodies
Applications:	WB
Recommended Dilution:	<b>ELISA:</b> 1/1000. <b>Western Blot:</b> 1/100-1/500.
Reactivity:	Human, Mouse
Host:	Rabbit
Isotype:	Ig
Clonality:	Polyclonal
Immunogen:	KLH conjugated synthetic peptide between 417-446 amino acids from the C-terminal region of human PPP2R5A
Specificity:	This antibody recognizes PPP2R5A (C-term).
Formulation:	PBS containing 0.09% (W/V) Sodium Azide as preservative State: Aff - Purified State: Liquid purified Ig fraction
Concentration:	lot specific
Purification:	Affinity Chromatography on Protein A
Conjugation:	Unconjugated
Storage:	Store undiluted at 2-8°C for one month or (in aliquots) at -20°C for longer. Avoid repeated freezing and thawing.
Stability:	Shelf life: one year from despatch.
Gene Name:	protein phosphatase 2 regulatory subunit B'alpha
Database Link:	<a href="#">Entrez Gene 226849 Mouse</a> <a href="#">Entrez Gene 5525 Human</a> <a href="#">Q15172</a>



[View online »](#)

- Background:** The product of this gene belongs to the phosphatase 2A regulatory subunit B family. Protein phosphatase 2A is one of the four major Ser/Thr phosphatases, and it is implicated in the negative control of cell growth and division. It consists of a common heteromeric core enzyme, which is composed of a catalytic subunit and a constant regulatory subunit, that associates with a variety of regulatory subunits. The B regulatory subunit might modulate substrate selectivity and catalytic activity. This gene encodes an alpha isoform of the regulatory subunit B56 subfamily.
- Synonyms:** Protein phosphatase 2A, PP2A B subunit B'alpha isoform, PP2A B subunit B56 alpha isoform, PP2A B subunit PR61 alpha isoform, PP2A B subunit R5 alpha isoform
- Note:** **Molecular Weight:** 56194 Da
- Protein Families:** Druggable Genome, Phosphatase
- Protein Pathways:** Oocyte meiosis, Wnt signaling pathway

**Product images:**

Western blot analysis of PPP2R5A Antibody (C-term) in mouse liver tissue lysates (35ug/lane). This demonstrates the PPP2R5A antibody detected the PPP2R5A protein (arrow).