

## Product datasheet for **AP53419PU-N**

### PPP1R9B (N-term) Rabbit Polyclonal Antibody

#### Product data:

Product Type:	Primary Antibodies
Applications:	WB
Recommended Dilution:	<b>ELISA:</b> 1/1000. <b>Western Blot:</b> 1/100-1/500.
Reactivity:	Human
Host:	Rabbit
Isotype:	Ig
Clonality:	Polyclonal
Immunogen:	KLH conjugated synthetic peptide between 23-53 amino acids from the N-terminal region of Human Neurabin-2.
Specificity:	This antibody recognizes Human Neurabin-2 (N-term).
Formulation:	PBS containing 0.09% (W/V) Sodium Azide as preservative State: Aff - Purified State: Liquid purified Ig fraction
Concentration:	lot specific
Purification:	Affinity Chromatography on Protein A
Conjugation:	Unconjugated
Storage:	Store undiluted at 2-8°C for one month or (in aliquots) at -20°C for longer. Avoid repeated freezing and thawing.
Stability:	Shelf life: one year from despatch.
Gene Name:	protein phosphatase 1 regulatory subunit 9B
Database Link:	<a href="#">Entrez Gene 84687 Human Q96SB3</a>
Background:	Spinophilin is a regulatory subunit of protein phosphatase-1 catalytic subunit (PP1; see MIM 176875) and is highly enriched in dendritic spines, specialized protrusions from dendritic shafts that receive most of the excitatory input in the central nervous system (Allen et al., 1997 [PubMed 9275233]).
Synonyms:	PPP1R9B, PPP1R6

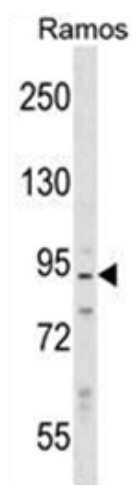


[View online »](#)

Note: **Molecular Weight:** 89192 Da

Protein Families: Druggable Genome, Phosphatase

### Product images:



Western blot analysis of Neurabin-2 Antibody (N-term) in Ramos cell line lysates (35ug/lane). This demonstrates the PPP1R9B antibody detected the PPP1R9B protein (arrow).