

Product datasheet for **AP53418PU-N**

PPP1R3G (C-term) Rabbit Polyclonal Antibody

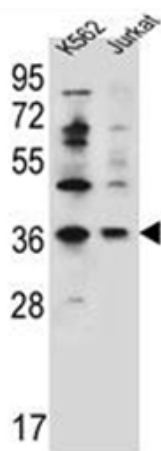
Product data:

Product Type:	Primary Antibodies
Applications:	WB
Recommended Dilution:	ELISA: 1/1000. Western Blot: 1/100-1/500.
Reactivity:	Human
Host:	Rabbit
Isotype:	Ig
Clonality:	Polyclonal
Immunogen:	KLH conjugated synthetic peptide between 276-307 amino acids from the C-terminal region of Human PPP1R3G
Specificity:	This antibody recognizes Human PPP1R3G (C-term).
Formulation:	PBS containing 0.09% (W/V) Sodium Azide as preservative State: Aff - Purified State: Liquid purified Ig fraction
Concentration:	lot specific
Purification:	Affinity Chromatography on Protein A
Conjugation:	Unconjugated
Storage:	Store undiluted at 2-8°C for one month or (in aliquots) at -20°C for longer. Avoid repeated freezing and thawing.
Stability:	Shelf life: one year from despatch.
Gene Name:	protein phosphatase 1 regulatory subunit 3G
Database Link:	Entrez Gene 648791 Human B7ZBB8
Background:	The function of PPP1R3G remains unknown.
Synonyms:	Putative protein phosphatase 1 regulatory inhibitor subunit 3G
Note:	Molecular Weight: 38019 Da



[View online »](#)

Product images:



Western blot analysis of PPP1R3G Antibody (C-term) in K562, Jurkat cell line lysates (35ug/lane). This demonstrates the PPP1R3G antibody detected the PPP1R3G protein (arrow).