

## Product datasheet for **AP53416PU-N**

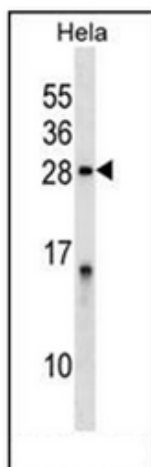
### IPP 2 (PPP1R2) (Center) Rabbit Polyclonal Antibody

#### Product data:

Product Type:	Primary Antibodies
Applications:	WB
Recommended Dilution:	<b>ELISA:</b> 1/1000. <b>Western Blot:</b> 1/100-1/500.
Reactivity:	Human
Host:	Rabbit
Isotype:	Ig
Clonality:	Polyclonal
Immunogen:	KLH conjugated synthetic peptide between 118-148 amino acids from the Central region of human PPP1R2.
Specificity:	This antibody recognizes Human PPP1R2 (Center).
Formulation:	PBS containing 0.09% (W/V) Sodium Azide as preservative State: Aff - Purified State: Liquid purified Ig fraction
Concentration:	lot specific
Purification:	Affinity Chromatography on Protein A
Conjugation:	Unconjugated
Storage:	Store undiluted at 2-8°C for one month or (in aliquots) at -20°C for longer. Avoid repeated freezing and thawing.
Stability:	Shelf life: one year from despatch.
Gene Name:	protein phosphatase 1 regulatory inhibitor subunit 2
Database Link:	<a href="#">Entrez Gene 5504 Human P41236</a>
Background:	PPP1R2 is an inhibitor of protein-phosphatase 1.
Synonyms:	Protein phosphatase inhibitor 2, IPP-2
Note:	<b>Molecular Weight:</b> 23015 Da
Protein Families:	Druggable Genome



[View online »](#)

**Product images:**

Western blot analysis of PPP1R2 Antibody (Center) in HeLa cell line lysates (35ug/lane). This demonstrates the PPP1R2 antibody detected the PPP1R2 protein (arrow)