

Product datasheet for **AP53414PU-N**

PPM1L (C-term) Rabbit Polyclonal Antibody

Product data:

Product Type:	Primary Antibodies
Applications:	IHC, WB
Recommended Dilution:	ELISA: 1/1000. Western Blot: 1/100-1/500. Flow Cytometry: 1/10-1/50. Immunohistochemistry on Paraffin Sections: 1/50-1/100.
Reactivity:	Human, Mouse
Host:	Rabbit
Isotype:	Ig
Clonality:	Polyclonal
Immunogen:	KLH conjugated synthetic peptide between 215-244 amino acids from the C-terminal region of Human PPM1L
Specificity:	This antibody recognizes Human and Mouse PPM1L (C-term).
Formulation:	PBS containing 0.09% (W/V) Sodium Azide as preservative State: Aff - Purified State: Liquid purified Ig fraction
Concentration:	lot specific
Purification:	Affinity Chromatography on Protein A
Conjugation:	Unconjugated
Storage:	Store undiluted at 2-8°C for one month or (in aliquots) at -20°C for longer. Avoid repeated freezing and thawing.
Stability:	Shelf life: one year from despatch.
Gene Name:	protein phosphatase, Mg ²⁺ /Mn ²⁺ dependent 1L
Database Link:	Entrez Gene 242083 Mouse Entrez Gene 151742 Human Q5SGD2



[View online »](#)

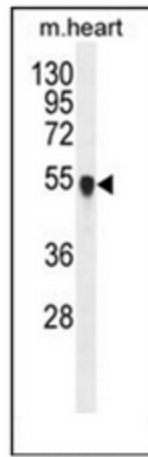
Background: PPM1L, or PP2CE, belongs to the PP2C group of serine/threonine phosphatases, which are distinguished from other phosphatases by their structure, absolute requirement for Mg(2+) or Mn(2+), and insensitivity to okadaic acid. PP2Cs regulate stress-activated protein kinase (SAPK; see MIM 601158) signaling cascades that respond to extracellular stimuli (Jin et al., 2004 [PubMed 15560375]).

Synonyms: PP2CE, Protein phosphatase 2C isoform epsilon, PP2C-epsilon

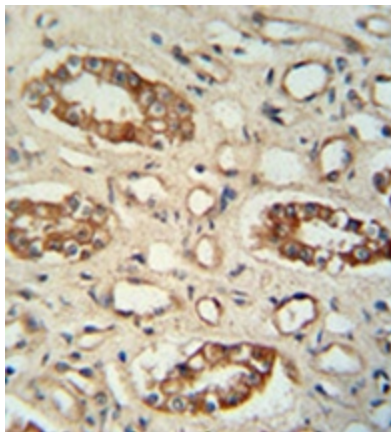
Note: **Molecular Weight:** 41053 Da

Protein Families: Druggable Genome, Phosphatase

Product images:



Western blot analysis of PPM1L Antibody (C-term) in mouse heart tissue lysates (35ug/lane). This demonstrates the PPM1L antibody detected the PPM1L protein (arrow).



Formalin fixed and paraffin embedded human lung tissue reacted with PPM1L Antibody (C-term) followed by peroxidase conjugation of the secondary antibody and DAB staining.