

Product datasheet for **AP53413PU-N**

PPM1H (Center) Rabbit Polyclonal Antibody

Product data:

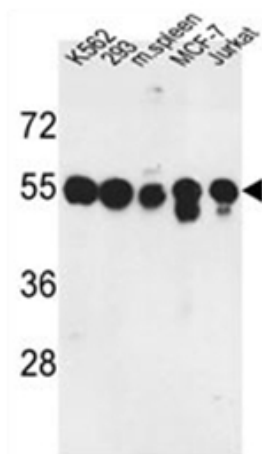
Product Type:	Primary Antibodies
Applications:	FC, IHC, WB
Recommended Dilution:	ELISA: 1/1000. Western Blot: 1/1000. Flow Cytometry: 1/10-1/50. Immunohistochemistry on Paraffin Sections: 1/50-1/100.
Reactivity:	Human, Mouse
Host:	Rabbit
Isotype:	Ig
Clonality:	Polyclonal
Immunogen:	KLH conjugated synthetic peptide between 235~263 amino acids from the Central region of Human PPM1H
Specificity:	This antibody recognizes Human PPM1H (Center).
Formulation:	PBS containing 0.09% (W/V) Sodium Azide as preservative State: Aff - Purified State: Liquid purified Ig fraction
Concentration:	lot specific
Purification:	Affinity Chromatography on Protein A
Conjugation:	Unconjugated
Storage:	Store undiluted at 2-8°C for one month or (in aliquots) at -20°C for longer. Avoid repeated freezing and thawing.
Stability:	Shelf life: one year from despatch.
Gene Name:	protein phosphatase, Mg ²⁺ /Mn ²⁺ dependent 1H
Database Link:	Entrez Gene 319468 Mouse Entrez Gene 57460 Human Q9ULR3
Synonyms:	ARHCL1, KIAA1157
Note:	Molecular Weight: 56448 Da



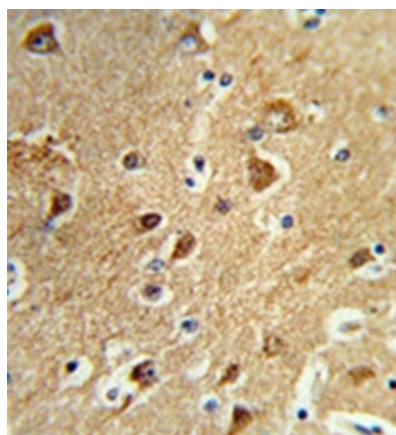
[View online »](#)

Protein Families: Phosphatase

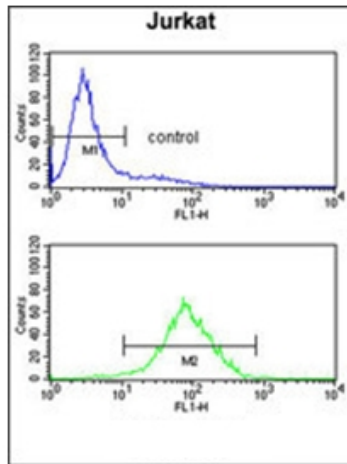
Product images:



Western blot analysis of PPM1H Antibody in K562, 293, MCF-7, Jurkat cell line and mouse spleen tissue lysates (35ug/lane). PPM1H (arrow) was detected using the purified Pab.



Formalin-fixed and paraffin-embedded human brain tissue reacted with PPM1H Antibody, which was peroxidase-conjugated to the secondary antibody, followed by DAB staining.



Flow cytometry analysis of Jurkat cells using PPM1H Antibody (bottom histogram) compared to a negative control cell (top histogram). FITC-conjugated goat-anti-rabbit secondary antibodies were used for the analysis.