

## Product datasheet for **AP53412PU-N**

### PPIL1 (Center) Rabbit Polyclonal Antibody

#### Product data:

Product Type:	Primary Antibodies
Applications:	WB
Recommended Dilution:	<b>ELISA:</b> 1/1000. <b>Western Blot:</b> 1/100-1/500.
Reactivity:	Human
Host:	Rabbit
Isotype:	Ig
Clonality:	Polyclonal
Immunogen:	KLH conjugated synthetic peptide between 62-91 amino acids from the Central region of human PPIL1
Specificity:	This antibody recognizes Human PPIL1 (Center).
Formulation:	PBS containing 0.09% (W/V) Sodium Azide as preservative State: Aff - Purified State: Liquid purified Ig fraction
Concentration:	lot specific
Purification:	Affinity Chromatography on Protein A
Conjugation:	Unconjugated
Storage:	Store undiluted at 2-8°C for one month or (in aliquots) at -20°C for longer. Avoid repeated freezing and thawing.
Stability:	Shelf life: one year from despatch.
Gene Name:	peptidylprolyl isomerase like 1
Database Link:	<a href="#">Entrez Gene 51645 Human Q9Y3C6</a>
Background:	This gene is a member of the cyclophilin family of peptidylprolyl isomerases (PPIases). The cyclophilins are a highly conserved, ubiquitous family, members of which play an important role in protein folding, immunosuppression by cyclosporin A, and infection of HIV-1 virions. Based on similarity to other PPIases, this protein could accelerate the folding of proteins and might catalyze the cis-trans isomerization of proline imidic peptide bonds in oligopeptides.



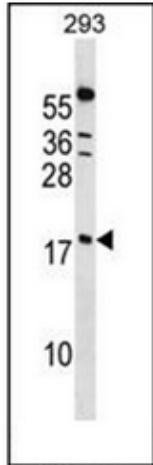
[View online »](#)

**Synonyms:** CYPL1, PPIase

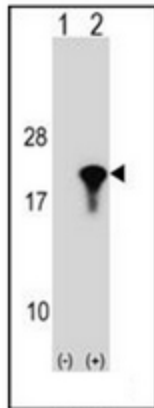
**Note:** **Molecular Weight:** 18237 Da

**Protein Pathways:** Spliceosome

**Product images:**



Western blot analysis of PPIL1 Antibody (Center) in 293 cell line lysates (35ug/lane). This demonstrates the PPIL1 antibody detected the PPIL1 protein (arrow)



Western blot analysis of PPIL1 (arrow) using PPIL1 Antibody (Center). 293 cell lysates (2 ug/lane) either nontransfected (Lane 1) or transiently transfected (Lane 2) with the PPIL1 gene.