

## Product datasheet for **AP53411PU-N**

### Cyclophilin F (PPIF) (Center) Rabbit Polyclonal Antibody

#### Product data:

Product Type:	Primary Antibodies
Applications:	WB
Recommended Dilution:	<b>ELISA:</b> 1/1000. <b>Western Blot:</b> 1/100-1/500.
Reactivity:	Human
Host:	Rabbit
Isotype:	Ig
Clonality:	Polyclonal
Immunogen:	KLH conjugated synthetic peptide between 102-131 amino acids from the Central region of Human Cyclophilin F.
Specificity:	This antibody recognizes Human Cyclophilin F (Center).
Formulation:	PBS containing 0.09% (W/V) Sodium Azide as preservative State: Aff - Purified State: Liquid purified Ig fraction
Concentration:	lot specific
Purification:	Affinity Chromatography on Protein A
Conjugation:	Unconjugated
Storage:	Store undiluted at 2-8°C for one month or (in aliquots) at -20°C for longer. Avoid repeated freezing and thawing.
Stability:	Shelf life: one year from despatch.
Gene Name:	peptidylprolyl isomerase F
Database Link:	<a href="#">Entrez Gene 10105 Human P30405</a>
Background:	PPIF is a member of the peptidyl-prolyl cis-trans isomerase (PPIase) family. PPIases catalyze the cis-trans isomerization of proline imidic peptide bonds in oligopeptides and accelerate the folding of proteins. This protein is part of the mitochondrial permeability transition pore in the inner mitochondrial membrane. Activation of this pore is thought to be involved in the induction of apoptotic and necrotic cell death.

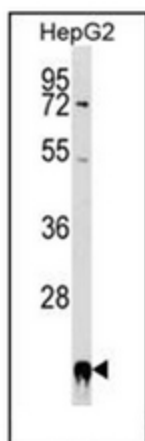


[View online »](#)

Synonyms: PPlase F, Rotamase F, PPIF, CYP3

Note: **Molecular Weight:** 22040 Da

**Product images:**



Western blot analysis of PPIF Antibody (Center) in HepG2 cell line lysates (35ug/lane). This demonstrates the PPIF antibody detected the PPIF protein (arrow).